

# USER'S MANUAL

## **UST200-83H-FL**

**Robust DIN-rail Fanless Embedded  
System**

**User's Manual**



[www.axiomtek.com](http://www.axiomtek.com)

## **Disclaimers**

This manual has been carefully checked and believed to contain accurate information. Axiomtek Co., Ltd. assumes no responsibility for any infringements of patents or any third party's rights, and any liability arising from such use.

Axiomtek does not warrant or assume any legal liability or responsibility for the accuracy, completeness or usefulness of any information in this document. Axiomtek does not make any commitment to update the information in this manual.

Axiomtek reserves the right to change or revise this document and/or product at any time without notice.

No part of this document may be reproduced, stored in a retrieval system, or transmitted, in any form or by any means, electronic, mechanical, photocopying, recording, or otherwise, without the prior written permission of Axiomtek Co., Ltd.

**©Copyright 2024 Axiomtek Co., Ltd.**

**All Rights Reserved**

**May 2024, Version A5**

**Printed in Taiwan**

## Safety Precautions

Before getting started, please read the following important safety precautions.

1. The UST200-83H-FL does not come equipped with an operating system. An operating system must be loaded first before installing any software into the computer.
2. Be sure to ground yourself to prevent static charge when installing the internal components. Use a grounding wrist strap and place all electronic components in any static-shielded devices. Most electronic components are sensitive to static electrical charge.
3. Disconnect the power cord from the UST200-83H-FL before making any installation. Be sure both the system and the external devices are turned off. Sudden surge of power could ruin sensitive components. Make sure the UST200-83H-FL is properly grounded.
4. Make sure the voltage of the power source is correct before connecting the equipment to the power outlet.
5. Turn OFF the system power before cleaning. Clean the system using a cloth only. Do not spray any liquid cleaner directly onto the screen.
6. Do not leave this equipment in an uncontrolled environment where the storage temperature is below  $-45^{\circ}\text{C}$  or above  $85^{\circ}\text{C}$ . It may damage the equipment.
7. Do not open the system's back cover. If opening the cover for maintenance is a must, only a trained technician is allowed to do so. Integrated circuits on computer boards are sensitive to static electricity. To avoid damaging chips from electrostatic discharge, observe the following precautions:
  - Before handling a board or integrated circuit, touch an unpainted portion of the system unit chassis for a few seconds. This will help to discharge any static electricity on your body.
  - When handling boards and components, wear a grounding wrist strap, available from most electronic component stores.
8. This product is intended to be supplied by a Listed Power Adapter or DC power source, output meets SELV, rated 12-24Vdc, minimum 0.85-0.45A, Tma = 70 degree C, and the altitude of operation = 5000m.

If you need further assistance with purchasing the power source, please contact to manufacturer for further information.

### CAUTION

Risk of explosion may occur if the battery is replaced by an incorrect type. Dispose of used batteries according to the instructions.

### WARNING

- Do not touch the hot surface of the system unit when it is turned on.
- Restricted access area: The equipment should only be installed in a Restricted Access Area.

## **Classification**

1. Degree of protection against electric shock: not classified
2. Degree of protection against the ingress of water: IP20
3. Equipment not suitable for use in the presence of a flammable anesthetic mixture with air or with oxygen or nitrous oxide.
4. Mode of operation: Continuous

## **General Cleaning Tips**

You may need the following precautions before you begin to clean the computer. When you clean any single part or component for the computer, please read and understand the details below fully.

When you need to clean the device, please rub it with a piece of dry cloth.

1. Be cautious of the tiny removable components when you use a vacuum cleaner to absorb the dirt on the floor.
2. Turn the system off before you start to clean up the computer or any components.
3. Never drop the components inside the computer or get circuit board damp or wet.
4. Be cautious of all kinds of cleaning solvents or chemicals when you use it for the sake of cleaning. Some individuals may be allergic to the ingredients.
5. Try not to put any food, drink or cigarette around the computer.

## Cleaning Tools

Although many companies have created products to help improve the process of cleaning your computer and peripherals users can also use household items to clean their computers and peripherals. Below is a listing of items you may need or want to use while cleaning your computer or computer peripherals.

Keep in mind that some components in your computer may require a designated product for cleaning. Please read the instructions that come with a cleaning product to avoid misuse.

- Cloth: A piece of cloth is the best tool to use when rubbing up a component. Although paper towels or tissues can be used on most hardware as well, we still recommend you to rub it with a piece of cloth.
- Water or rubbing alcohol: You may moisten a piece of cloth a bit with some water or rubbing alcohol and rub it on the computer. Unknown solvents may be harmful to the plastics parts.
- Vacuum cleaner: Vacuuming the dust, dirt, hair, cigarette particles, and other particles out of a computer can be one of the best methods of cleaning a computer. Over time these items can restrict the airflow in a computer and cause circuitry to corrode.
- Cotton swabs: Cotton swabs moistened with rubbing alcohol or water are excellent tools for wiping hard to reach areas in your keyboard, mouse, and other locations.
- Foam swabs: Whenever possible it is better to use lint free swabs such as foam swabs.



**Note:** *We strongly recommended that you should shut down the system before you start to clean any single components.*

### **Please follow the steps below:**

1. Close all application programs;
2. Close operating software;
3. Turn off power;
4. Remove all device;
5. Pull out power cable.

## **Scrap Computer Recycling**

Please inform the nearest Axiomtek distributor as soon as possible for suitable solutions in case computers require maintenance or repair; or for recycling in case computers are out of order or no longer in use.

## **Trademarks Acknowledgments**

Axiomtek is a trademark of Axiomtek Co., Ltd. IBM, PC/AT, PS/2, VGA are trademarks of International Business Machines Corporation.

Intel® and Pentium® are registered trademarks of Intel Corporation.

MS-DOS, Microsoft C and QuickBASIC are trademarks of Microsoft Corporation. VIA is a trademark of VIA Technologies, Inc.

SST is a trademark of Silicon Storage Technology, Inc.

UMC is a trademark of United Microelectronics Corporation. Other brand names and trademarks are the properties and registered brands of their respective owners.

# Table of Contents

---

Disclaimers .....	ii
Safety Precautions .....	iii
Classification .....	iv
General Cleaning Tips .....	iv
Cleaning Tools .....	v
Scrap Computer Recycling.....	vi
<b>SECTION 1 INTRODUCTION.....</b>	<b>1</b>
1.1    General Description .....	1
1.2    System Specifications .....	2
1.3    Dimensions .....	7
1.4    I/O Outlets .....	8
1.5    Packing List.....	11
<b>SECTION 2 HARDWARE INSTALLATION .....</b>	<b>13</b>
2.1    Installing the Memory Module .....	13
2.2    Installing the mSATA .....	15
2.3    Installing the Wireless Module.....	16
2.4    Installing the DIN-rail Kit.....	22
2.5    Installing the Wall Mount Kit .....	23
<b>SECTION 3 AMI UEFI BIOS UTILITY .....</b>	<b>25</b>
3.1    Entering Setup .....	25
3.2    The Main Menu .....	26
3.3    Advanced Features .....	27
3.4    Chipset Feature .....	45
3.5    Security.....	46
3.6    Boot Mode .....	47
3.7    Save & Exit .....	50

**This page is intentionally left blank.**



# SECTION 1

## INTRODUCTION

This chapter contains general information and detailed specifications of the UST200-83H-FL. Chapter 1 includes the following sections:

- General Description
- System Specification
- Dimensions
- I/O Outlets

### 1.1 General Description

The UST200-83H fanless embedded system is suitable for in-vehicle communications control and protocol converter applications in critical environments. Built specifically for operation under rugged conditions, the UST200-83H-FL features a robust industrial-grade hardware design and an advanced cooling system. It also runs an extra low power consumption Intel® ATOM™ E3930 (1.3GHz/2-cores) processor to ensure optimal performance in an industrial temperature range of -40°C to +70°C.

The system's front accessible I/O cabling is very convenient for wiring and maintenance, including a VGA output which makes it particularly suited for communication control, SCADA and industrial automation. Its compact size along with wall-mount and DIN-rail mounting support also allows for easy installation into control cabinets.

Pre-installed with Linux and Windows®10, the UST200-83H-FL provides programmers with a friendly environment for developing application software at a lower cost. Moreover, with E-mark certified, the UST200-83H-FL can serve as a perfect solution for in-vehicle ticketing system, passenger display system, passenger counting system, onboard maintenance system and etc.

#### ● Features

- Fanless design
- Wide temperature operation range of -40°C to +70°C
- Supports 2 10/100/1000 Base-T Ethernets with Magnetic Isolated Protection
- 1 DB9 CANBus 2.0A/B (CANBus SKU)
- 1 DB9 COM Port supports RS-232/422/485 (COM SKU) (optional)
- 2 USB 2.0 ports
- 1 Wireless (USB and PCIe Interface)
- Supports one mSATA.
- Supports 12 and 24 Vdc typical in-vehicle power input with terminal block.
- 1 DB9 8 bits programmable TTL level digital input/output port.
- Wall mount and DIN-rail mounting
- CE, FCC and E-mark certified

- **O.S. Supported**

Windows<sup>®</sup> 10 and Linux Ubuntu 18.04 LTS

## **1.2 System Specifications**

### **1.2.1 CPU**

- Onboard Intel<sup>®</sup> ATOM™ E3930 (1.3 GHz/2-core) processor.

### **1.2.2 BIOS**

- AMI(American Megatrends Inc.) UEFI(Unified Extensible Firmware Interface) BIOS.

### **1.2.3 System Memory**

- One DDR3L 204-pin SO-DIMM (1.35V) slot.
- Supports 1866MHz max. up to 8GB.

### **1.2.4 Display**

- One slim type 15-pin D-Sub connector as VGA connector or HDMI1.4b connector
- Supports VGA standards up to 1920x1200@60Hz
- Supports HDMI standards up to 4096x2160@30Hz

### **1.2.5 Ethernet Ports**

- LAN chip: Intel Ethernet Controller  
Intel I210-AT
- 2 x RJ-45 connectors support 10/100/1000 Base-T Ethernet

### **1.2.6 Storage**

- 1 x mSATA.

### **1.2.7 Wireless**

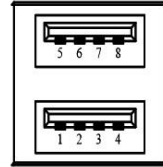
- 1 x Full size Mini Card slot supports modules with USB and PCIe interfaces.
- 1 x SIM card socket.
- 3 x Antenna holes.

### 1.2.8 USB

- 2 USB 2.0 ports
- USB Pin Define:

#### USB 2.0

Pin	Signal USB2.0 Port 1	Pin	Signal USB2.0 Port 2
1	VCC	5	VCC
2	D0-	6	D1-
3	D0+	7	D1+
4	GND	8	GND

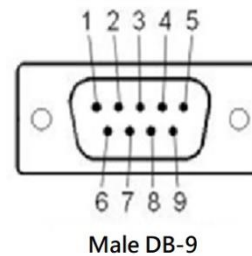


### 1.2.9 COM (COM SKU)

- 1 port DB9 supports RS-232/422/485, which can be selected by BIOS.
- Supports Auto Flow Control in RS485 mode.
- Serial Port Pin Define: (DB9 Male) as below
- Supports High Speed Mode 115.2 Kbps, Up to 1.5 Mbps

#### COM

Pin	RS-232	RS-422	RS-485
1	DCD	TX-	Data-
2	RXD	TX+	Data+
3	TXD	RX+	--
4	DTR	RX-	--
5	GND	GND	GND
6	DSR	--	--
7	RTS	--	--
8	CTS	--	--
9	RI	--	--



### 1.2.10 Power

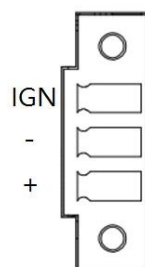
- Power Input

- DC Terminal block: Supports 12 & 24 VDC typical in-vehicle power input. OVP and Reverse protection.

\* Note: UST200 also supports 9 to 36VDC power input for general purpose. Please see Page. 30 for setting.

- Power Consumption: 9V, 2.06A/36V, 0.55A

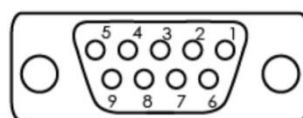
Pin	Signal
1	+
2	-
3	IGN



### 1.2.11 DIO

- One DB9 female connector supports 8 bits TTL level programmable digital input/output.
- The voltage of TTL is 5V
- The programming is as follow:
  - I/O sink current is 8~10mA
  - Input/Output is programmable

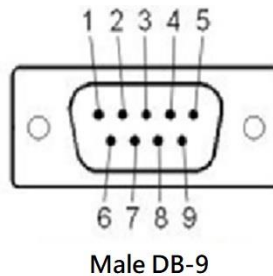
Pin	Signal
1	DIO0
2	DIO1
3	DIO2
4	DIO3
5	DIO4
6	DIO5
7	DIO6
8	DIO7
9	GND



Female DB-9

**1.2.12 CANBus (CANBus SKU)**

Pin	Signal
1	NC
2	CAN-L
3	GND
4	NC
5	GND
6	NC
7	CAN-H
8	NC
9	NC

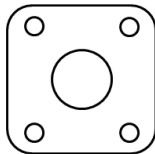


**1.2.13 WatchDog Timer (WDT)**

- 1~255 seconds or minutes; up to 255 levels.

**1.2.14 Restore BIOS Optimal Defaults (SW1)**

- Press the tact switch (SW 1) 4 seconds to restore optimal BIOS defaults.



**1.2.15 System LED**

- The table below summarizes the functional descriptions of the LED indicators and their corresponding colors.

LED Name	Description	Color
ACT	Indicates storage status. The LED flashes when storage is being accessed.	Orange
PWR	Indicates power status. When the DC input is acceptable, the LED will turn on.	Green

**1.2.16 Operation Temperature**

- Wide temperature -40°C ~ +70°C

**1.2.17 Storage Temperature**

- -40°C ~ +85°C

### **1.2.18 Humidity**

- 0% ~ 95% (non-condensation)

### **1.2.19 Weight**

- 0.3 kg

### **1.2.20 Dimensions**

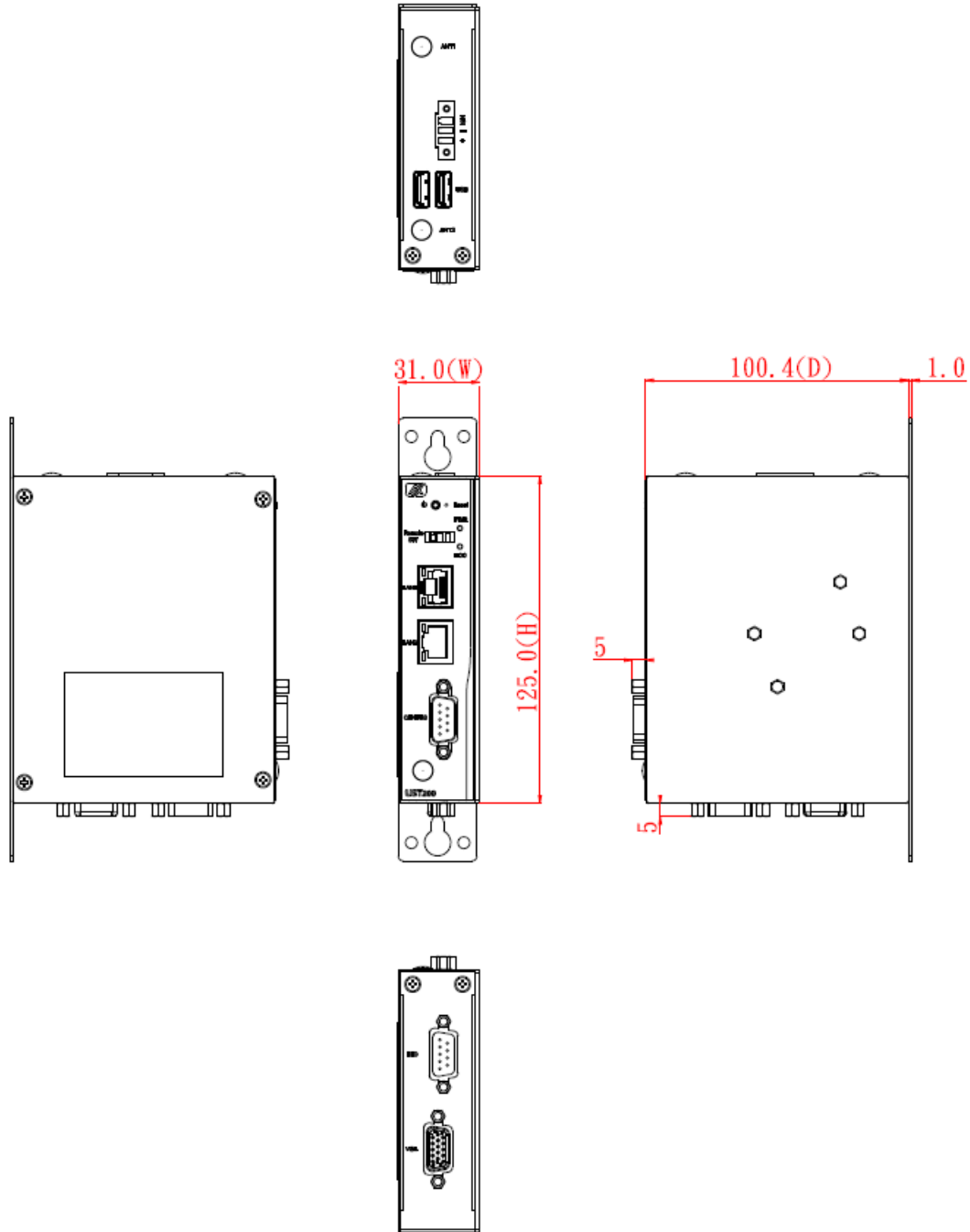
- 31mm (1.22") (W) x100mm (3.93") (D) x125mm (4.92") (H)

### **1.2.21 System I/O Outlets**

- 1 x 9-pin D-Sub male connector, COM1. (COM SKU)
- 1 x 9-pin D-Sub male connector, CANBus 2.0A/B (CAN SKU)
- 1 x 15-pin D-Sub female connector for VGA or 1.4b HDMI.
- 2 x 10/100/1000 Base-T RJ-45.
- 2 x USB 2.0 ports
- 1 x DC power input with terminal block.
- 1 x 9-pin D-Sub female connector for DIO.
- 3 x Antenna holes.

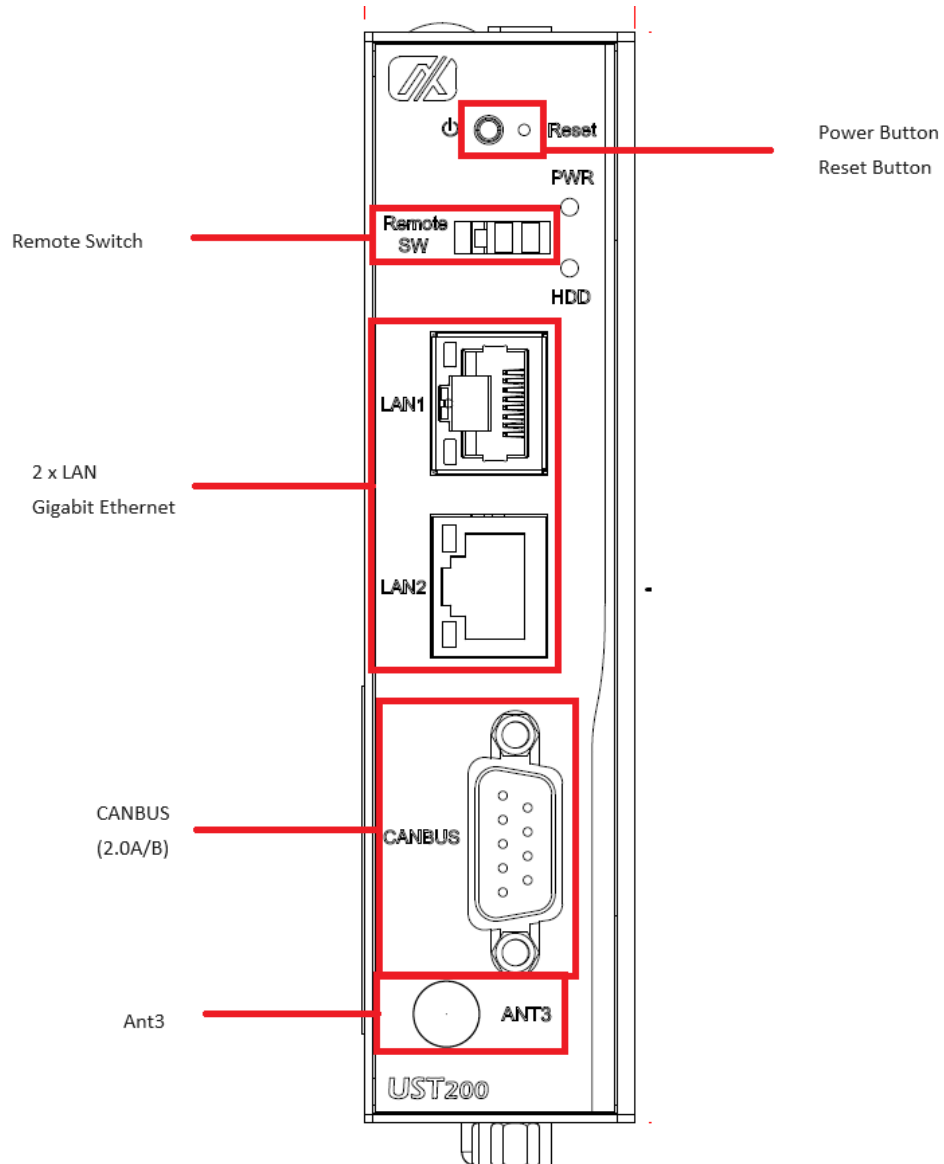
### 1.3 Dimensions

The following diagrams show you the dimensions and outlines of the UST200-83H-FL.

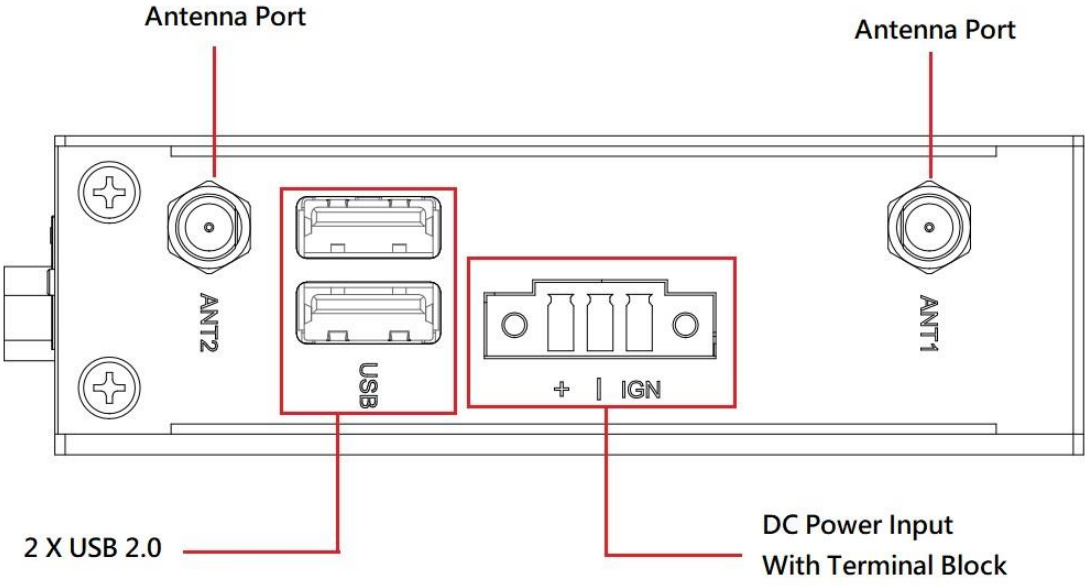


## 1.4 I/O Outlets

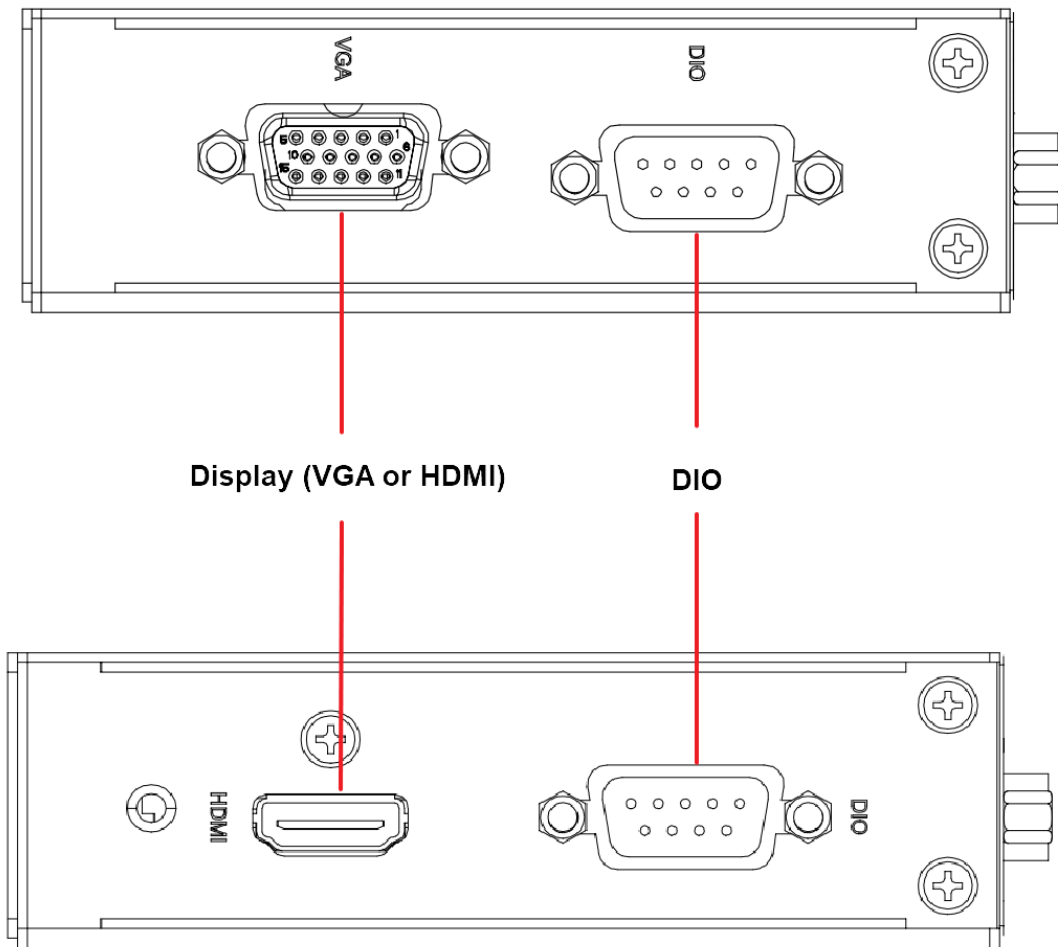
The following figures show you the I/O outlets on the front view and top view of the UST200-83H-FL.







The following figures show you the I/O outlets on the front view and bottom view of the UST200-83H-FL.



## 1.5 Packing List

The package bundled with your UST200-83H-FL should contain the following items:

- UST200-83H-FL System Unit x 1
- Screw pack x 1
- Wall-mount bracket x 1
- Din rail kit x 1
- Power terminal block connector x 1
- Thermal pad for memory module x 1

If you cannot find this package or any of the above-mentioned items is missing, please contact your local distributor immediately.

**This page is intentionally left blank.**

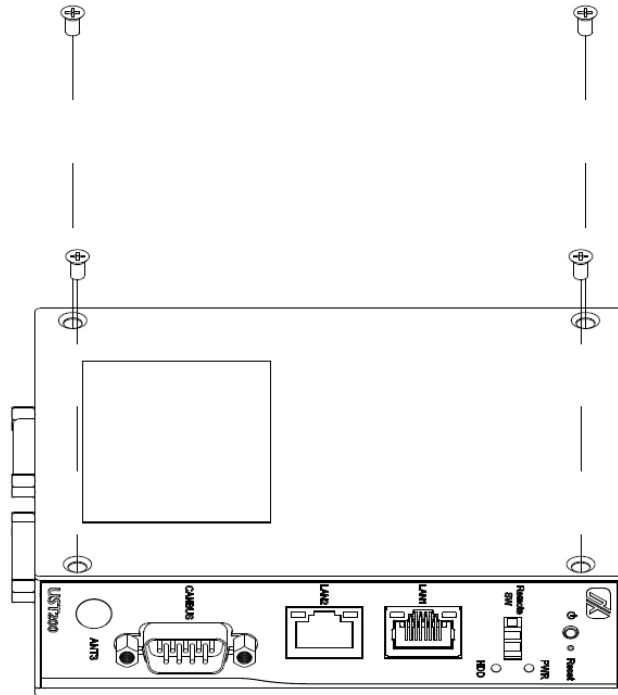
## SECTION 2 HARDWARE INSTALLATION

The UST200-83H-FL is convenient for your various hardware configurations, such as memory modules and mSATA drives. Chapter 2 will show you how to install the hardware.

### 2.1 Installing the Memory Module

**Step 1** Turn off the system.

**Step 2** Loosen all screws of the cover and remove the cover from the system.



**Step 3** Put the thermal pad on the memory module to increase cooling effect.



- Step 4** Use two fingers to hold the memory module, and insert the gold contact into the slot and push the module down.



- Step 5** The memory module is locked by two latches on the sides. We strongly recommend using “LDC737” silicone on both sides of the memory for optimal protection against vibration.

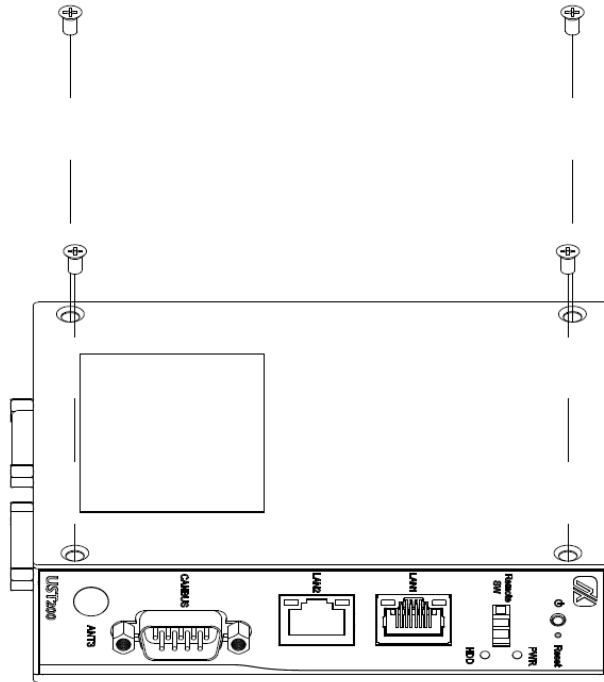


- Step 6** Put the cover back onto the system, and fasten all screws tight to close the chassis.

## 2.2 Installing the mSATA

**Step 1** Turn off the system.

**Step 2** Loosen all screws of the cover and remove the cover from the system.



**Step 3** Insert the mSATA into the slot with the marking “mSATA / USB / PCIe”.



**Step 4 Fasten the screws tightly.**

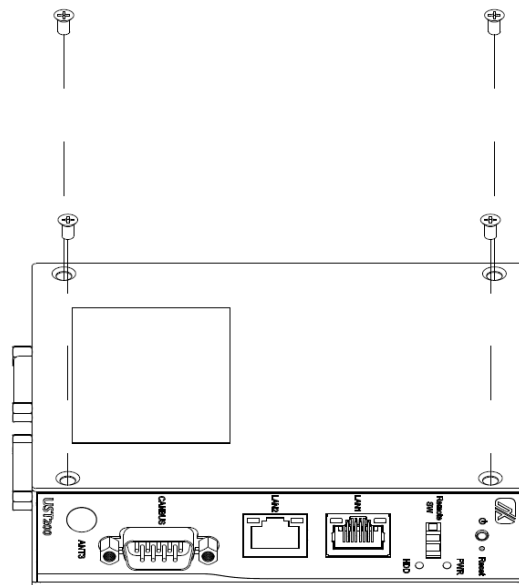


**Step 5 Put the cover back onto the system, and fasten all screws tight to close the chassis.**

### 2.3 Installing the Wireless Module

**Step 1 Turn off the system.**

**Step 2 Loosen all screws of the cover and remove the cover from the system.**





**Step 3** Slide the SIM slot upward to unlock and lift the SIM slot (Figure 3-1), insert the SIM card and put it back down (Figure 3-2), and then slide the SIM slot downward to lock it up (Figure 3-3).



Figure 3-1

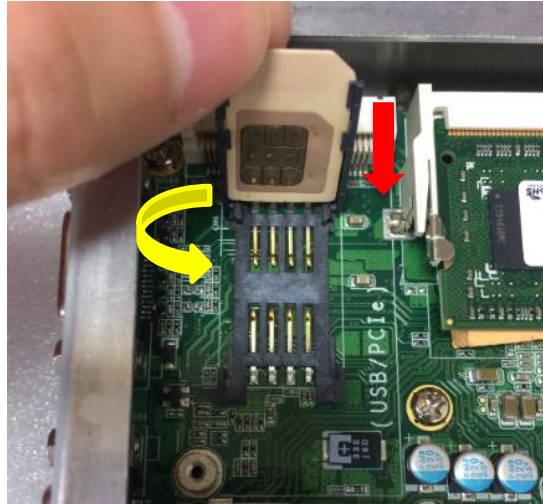


Figure 3-2

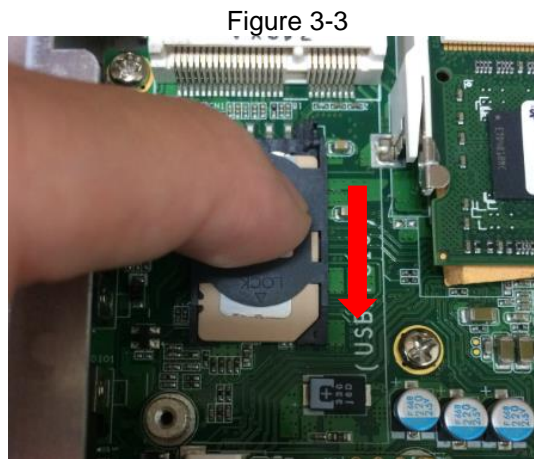
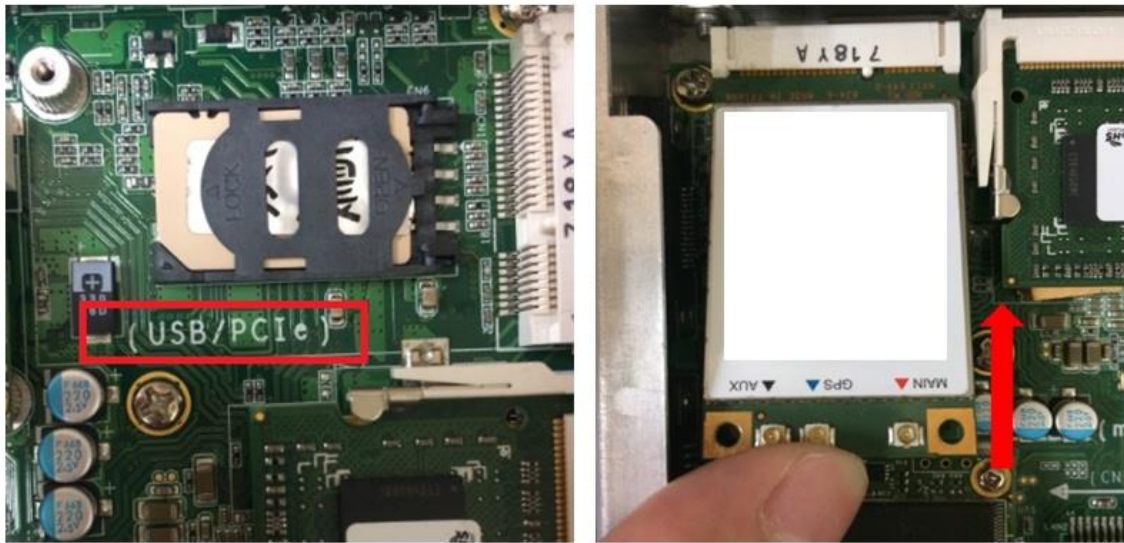


Figure 3-3

**Step 4** Insert the wireless module into the slot with the marking “USB/PCIe”.



**Step 5** Insert the LTE module and screw it tight.



**Step 6** Remove the plug cover from the chassis.



**Step 7** Connect the RF cable to the connector of the LTE module marked by “MAIN”.



**Step 8** Taking out the antenna nut and gasket from the LTE kit package (Figure 8-1). Make the end of the RF cable through the antenna hole (Figure 8-2). Finally, screw the end of the RF cable tightly with the antenna nut and gasket (Figure 8-3).



Figure 8-1



Figure 8-2

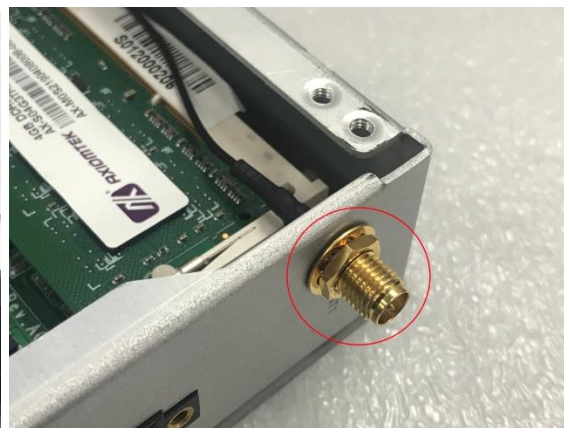


Figure 8-3

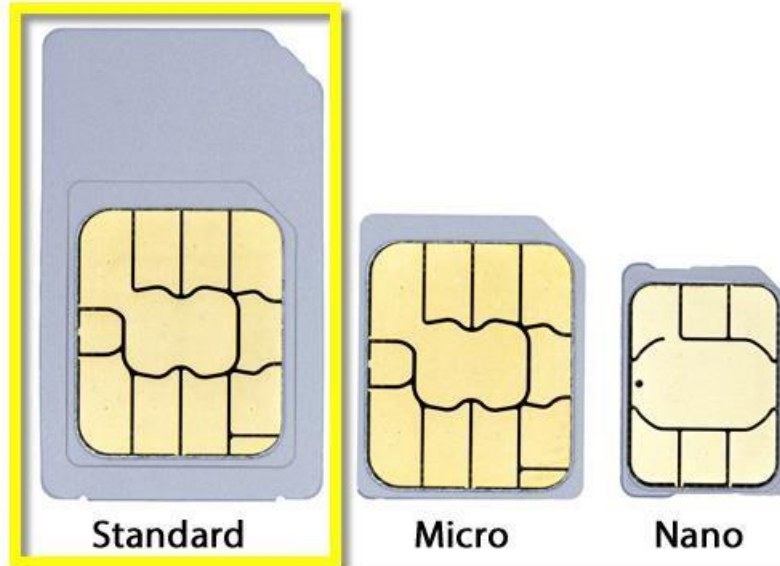
**Step 9** Screw the RF antenna tight.



**Step 10** Put the cover back onto the system, and fasten all screws tight to close the chassis.



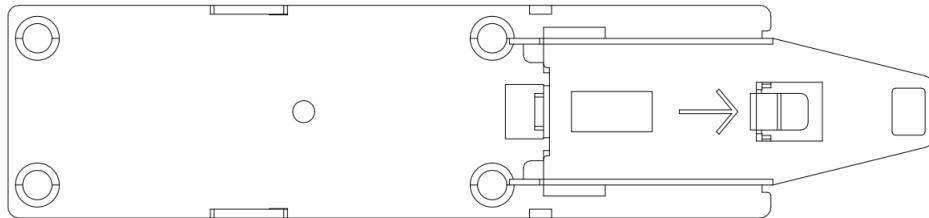
**Note:** Use only standard-size SIM cards, as illustrated below:



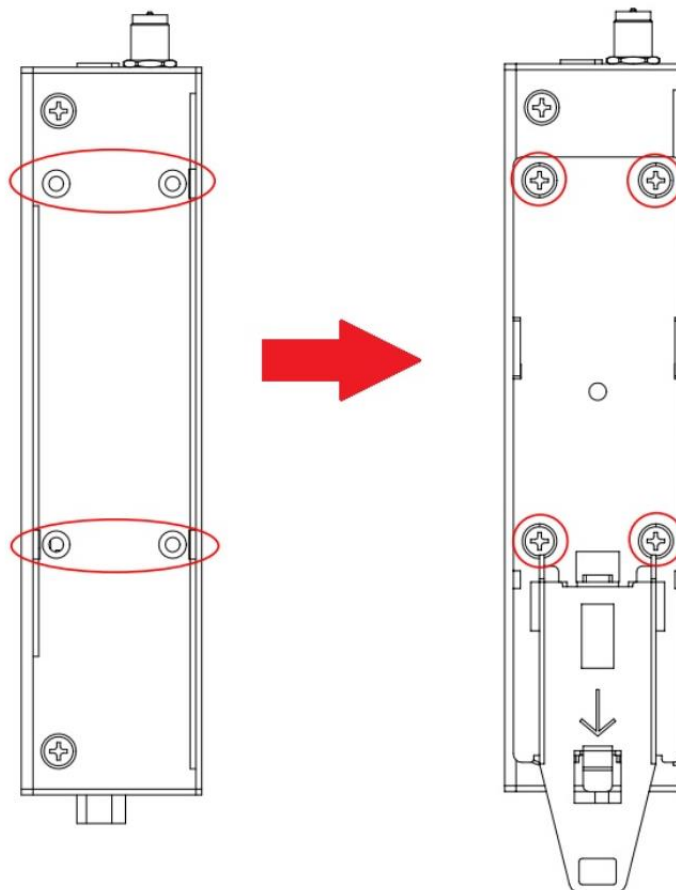
## 2.4 Installing the DIN-rail Kit

The UST200-83H-FL provides DIN-rail mount as illustrated below:

**Step 1 Prepare the DIN-rail mount assembling components (screws and bracket) ready.**



**Step 2 Assembly the bracket to the system and fasten all screws tight.**



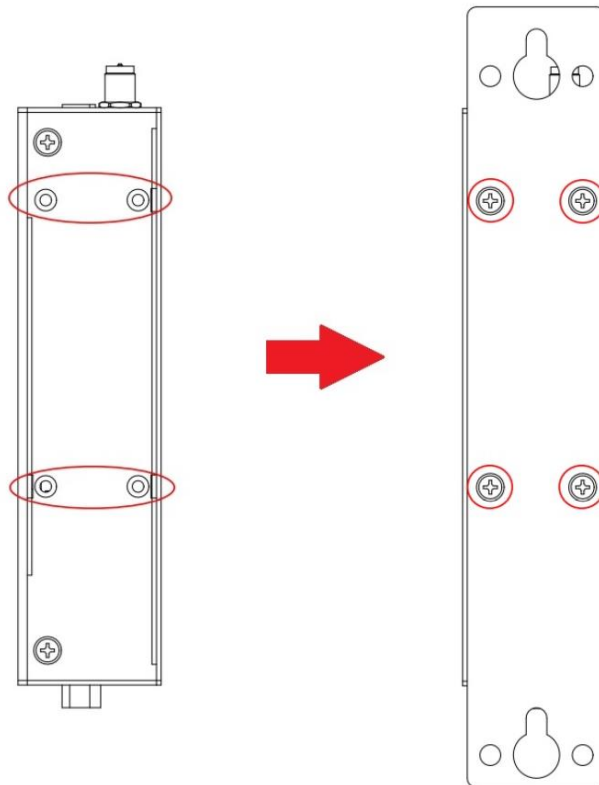
## 2.5 Installing the Wall Mount Kit

The UST200-83H-FL provides a wall mount kit that customers can install as illustrated below:

**Step 1 Prepare the wall mount assembling components (screws and bracket) ready.**



**Step 2 Assemble the bracket to the system, and fasten all screws tight.**



**This page is intentionally left blank.**



## **SECTION 3**

# **AMI UEFI BIOS UTILITY**

The AMI UEFI BIOS provides users with a built-in Setup program to modify basic system configuration. All configured parameters are stored in a flash backup to save the Setup information whenever the power is turned off.

### **3.1 Entering Setup**

To enter the setup screens, follow the steps below:

1. Turn on the computer and press the <Del> key immediately.
2. After you press the <Del> key, the main BIOS setup menu displays. You can access the other setup screens from the main BIOS setup menu, such as the Advanced and Chipset menus.

## 3.2 The Main Menu



Once you enter the AMI BIOS Aptio Setup Utility, the Main Menu appears on the screen. In the Main Menu, there are several Setup functions and a couple of Exit options for your selection. Use Select Screen Keys (or Move Keys) to select the Setup Page you intend to configure and then press <Enter> to accept or enter its sub-menu.

### System Date

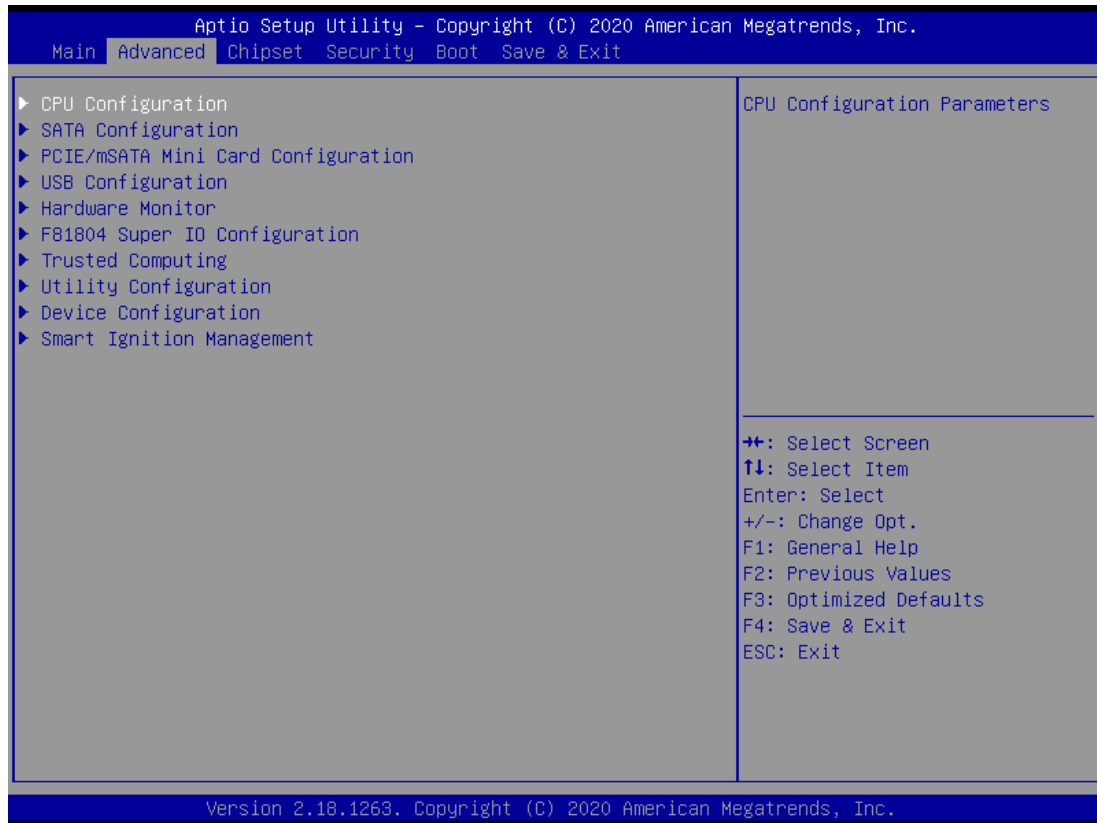
The date format is <day> <month> <date> <year>.

### System Time

This item shows current time of your system with the format <hour> <minute> <second>. The time is calculated based on the 24-hour military-time clock. For example, 1 p.m. is 13:00:00.

### 3.3 Advanced Features

This Advanced menu allows users to configure and improve your system, or to set up some system features according to your preference. You can select any of the items in the left frame of the screen to go to the sub menus:



#### CPU Configuration

Scroll to this item and press <Enter> to view the CPU Configuration information.

(Please refer below graphics.)

Aptio Setup Utility - Copyright (C) 2020 American Megatrends, Inc.

Advanced

<p>CPU Configuration</p> <p>Intel(R) Atom(TM) Processor E3930 @ 1.30GHz</p> <p>CPU Signature                    506CA</p> <p>Microcode Patch                 1A</p> <p>Max CPU Speed                   1300 MHz</p> <p>Min CPU Speed                   800 MHz</p> <p>Processor Cores                  2</p> <p>Intel HT Technology              Not Supported</p> <p>Intel VT-x Technology           Supported</p> <p>64-bit                              Supported</p> <p>L1 Data Cache                    24 kB x 2</p> <p>L1 Code Cache                    32 kB x 2</p> <p>L2 Cache                          1024 kB x 2</p> <p>L3 Cache                          Not Present</p> <p>Intel Virtualization Technology   [Enabled]</p>	<p>When enabled, a VMM can utilize the additional hardware capabilities provided by Vanderpool Technology</p>          <p>←→: Select Screen</p> <p>↑↓: Select Item</p> <p>Enter: Select</p> <p>+/-: Change Opt.</p> <p>F1: General Help</p> <p>F2: Previous Values</p> <p>F3: Optimized Defaults</p> <p>F4: Save &amp; Exit</p> <p>ESC: Exit</p>
---	--

Version 2.18.1263. Copyright (C) 2020 American Megatrends, Inc.

## SATA Configuration

Scroll to this item to view the SATA Configuration information.

(Please refer to below graphics.)



## PCIe/mSATA Mini Card Configuration

You can choose the PCIe or mSATA function for the Mini Card mode, selectable via the BIOS menu. The default setting is mSATA mode.

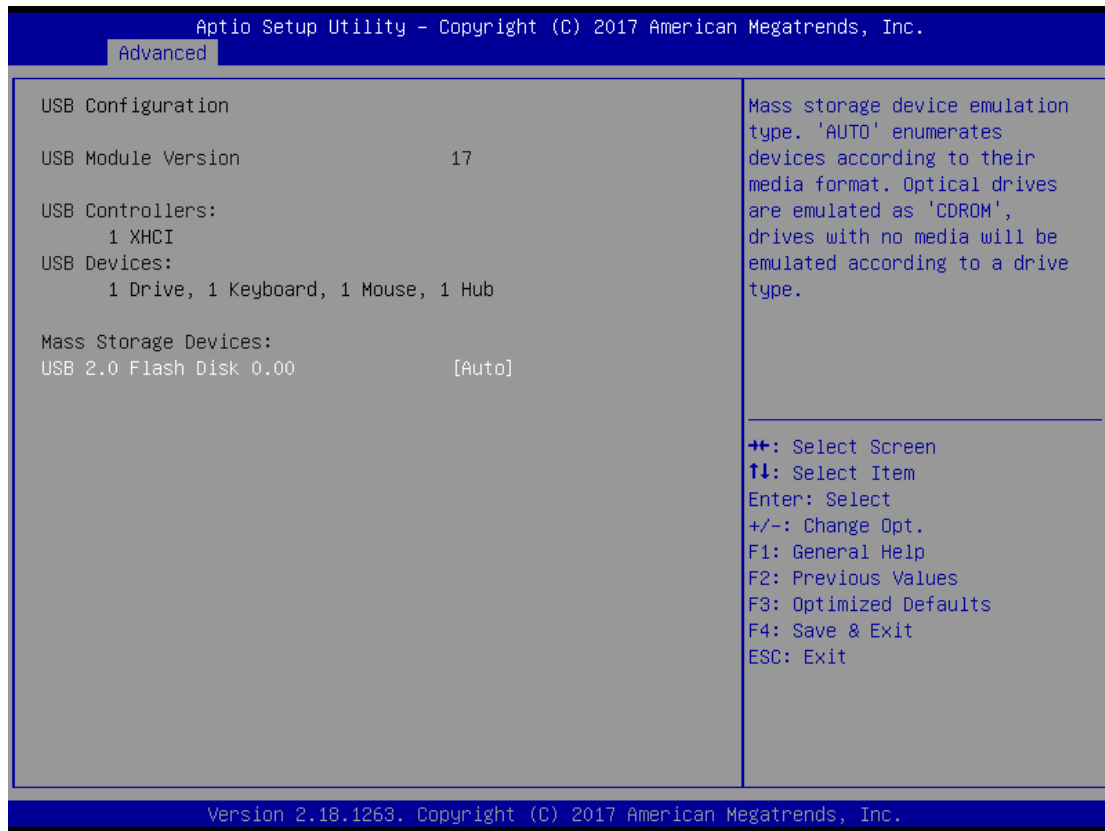
(Please refer below graphics.)



## USB Configuration

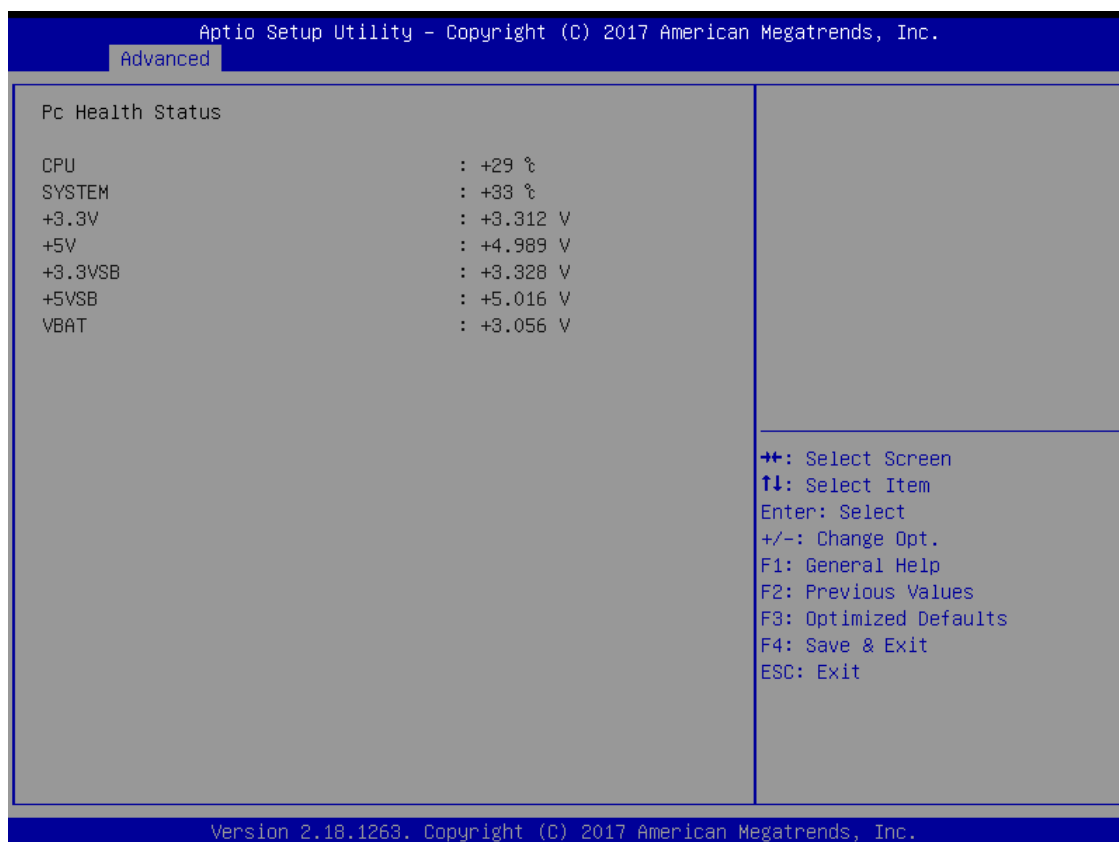
Scroll to this item and press <Enter> to view the USB Configuration information.

(Please refer below graphics.)



## H/W Monitor

Scroll to this item and press <Enter> to view the hardware status items under monitoring (please refer below graphics).

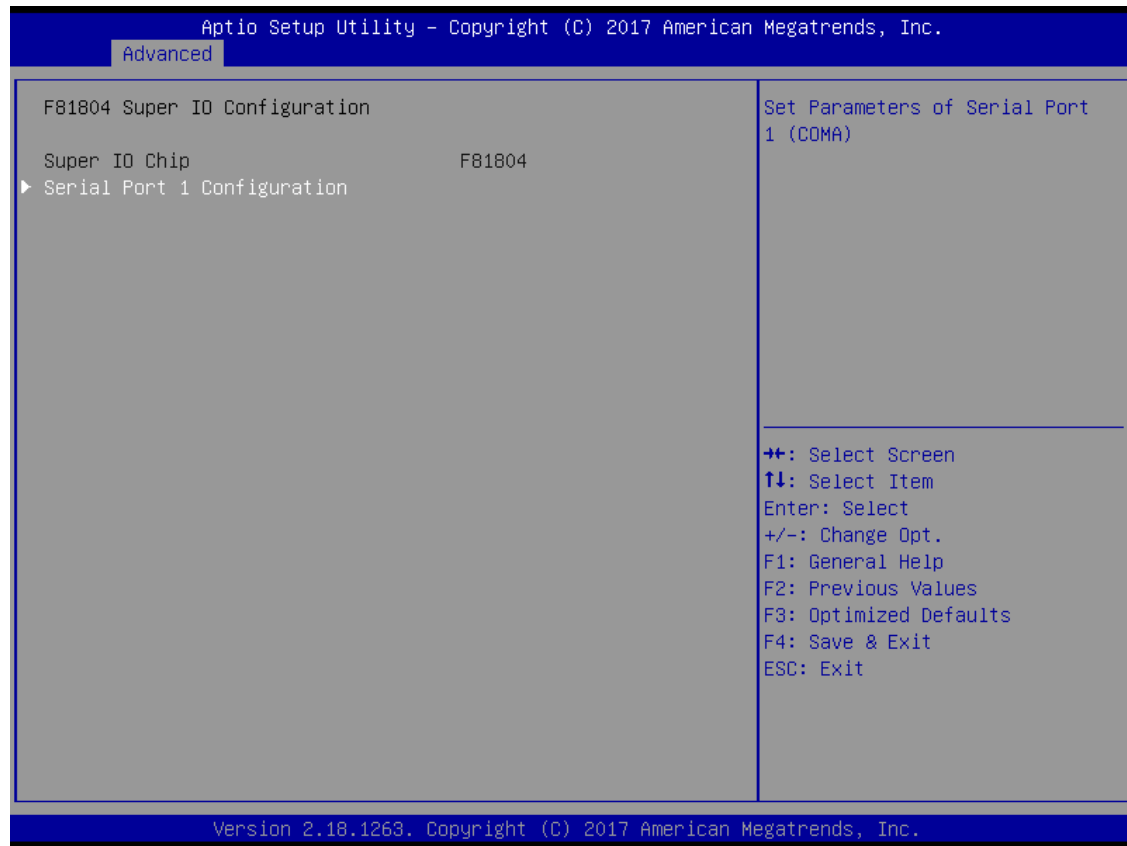


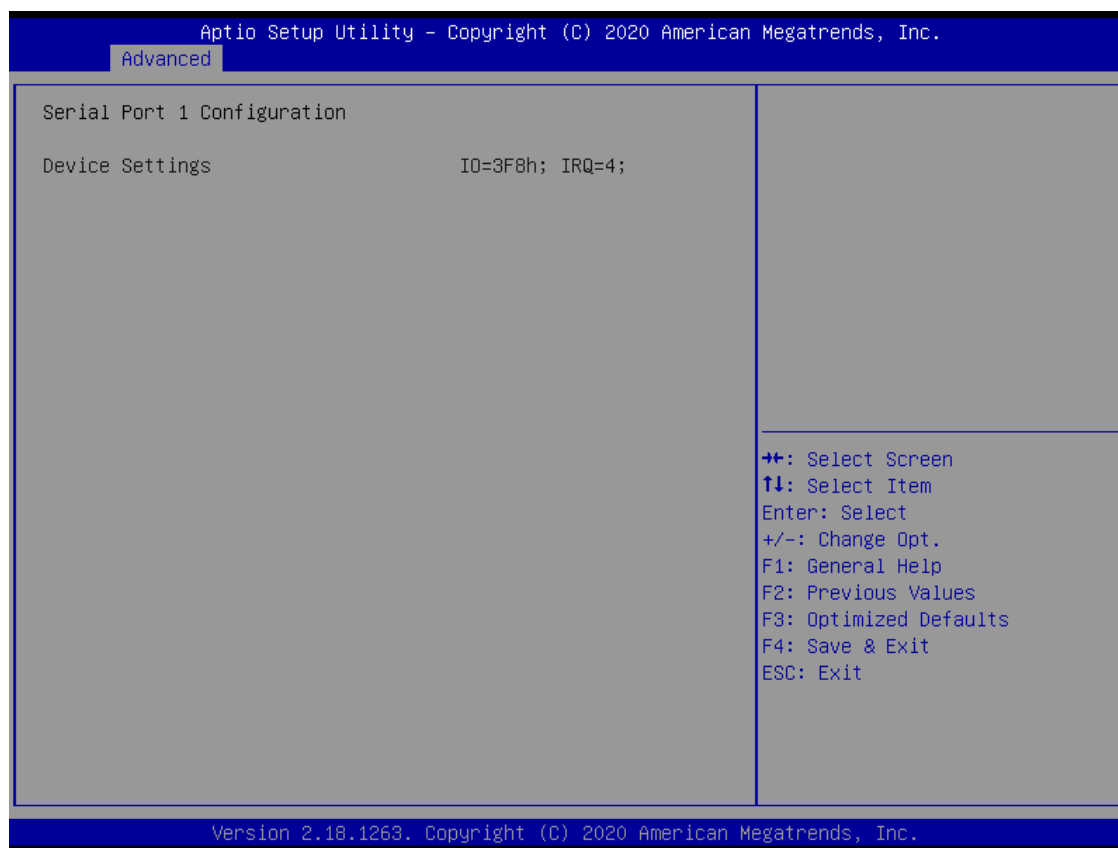


### F81804 Super IO Configuration

The default setting for Serial Port 1 is CAN.

(Please refer to below graphics.)





### Trust Computing

This sub-menu will allow you to enable/disable Trusted Platform Module (TPM) support, and to configure the TPM State. Select Trusted Computing and press Enter to access the sub-menu. Select Security Device Support item to Enable the TPM device

Aptio Setup Utility - Copyright (C) 2020 American Megatrends, Inc.

Advanced

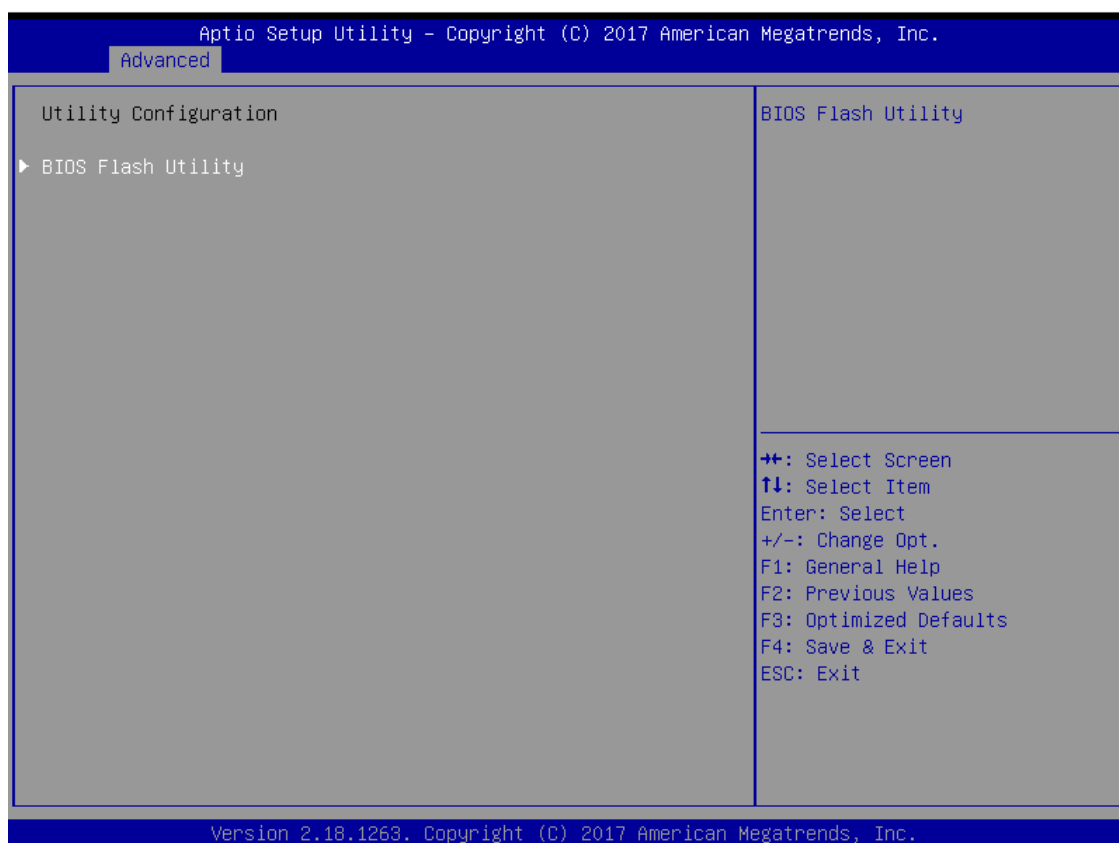
<p>TPM20 Device Found</p> <p>Security Device Support                    [Enable]          Active PCR banks                         SHA-1          Available PCR banks                     SHA-1,SHA256</p> <p>TPM 20 InterfaceType                    [TIS]</p>	<p>Enables or Disables BIOS support for security device. O.S. will not show Security Device. TCG EFI protocol and INT1A interface will not be available.</p> <hr/> <p>             ++: Select Screen              ↑↓: Select Item              Enter: Select              +/-: Change Opt.              F1: General Help              F2: Previous Values              F3: Optimized Defaults              F4: Save &amp; Exit              ESC: Exit         </p>
---	--

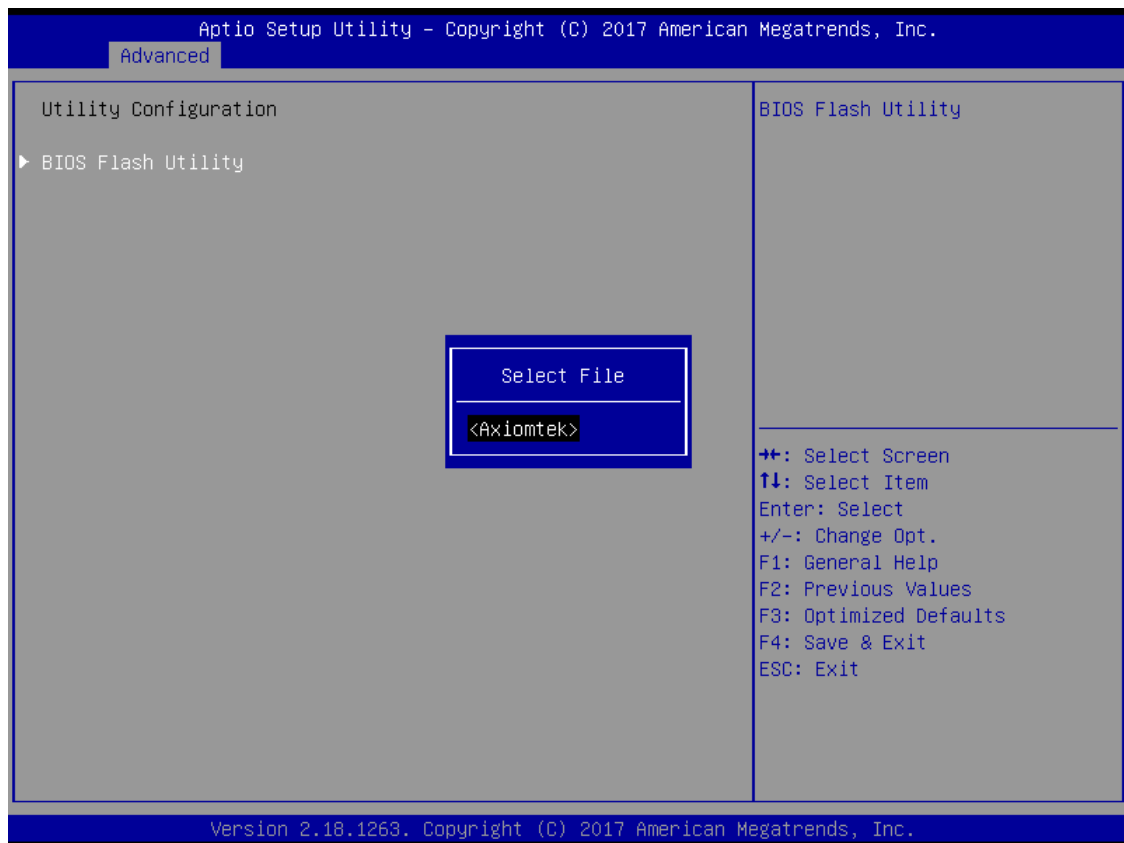
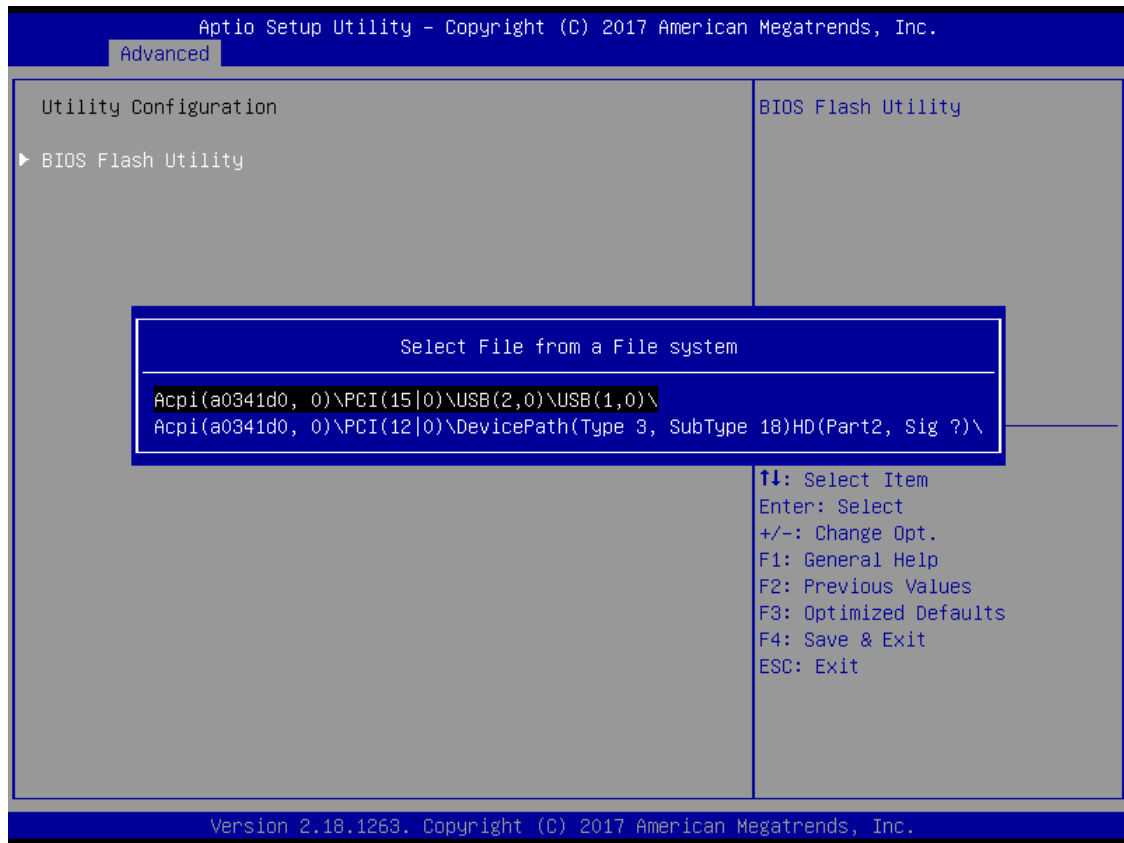
Version 2.18.1263. Copyright (C) 2020 American Megatrends, Inc.

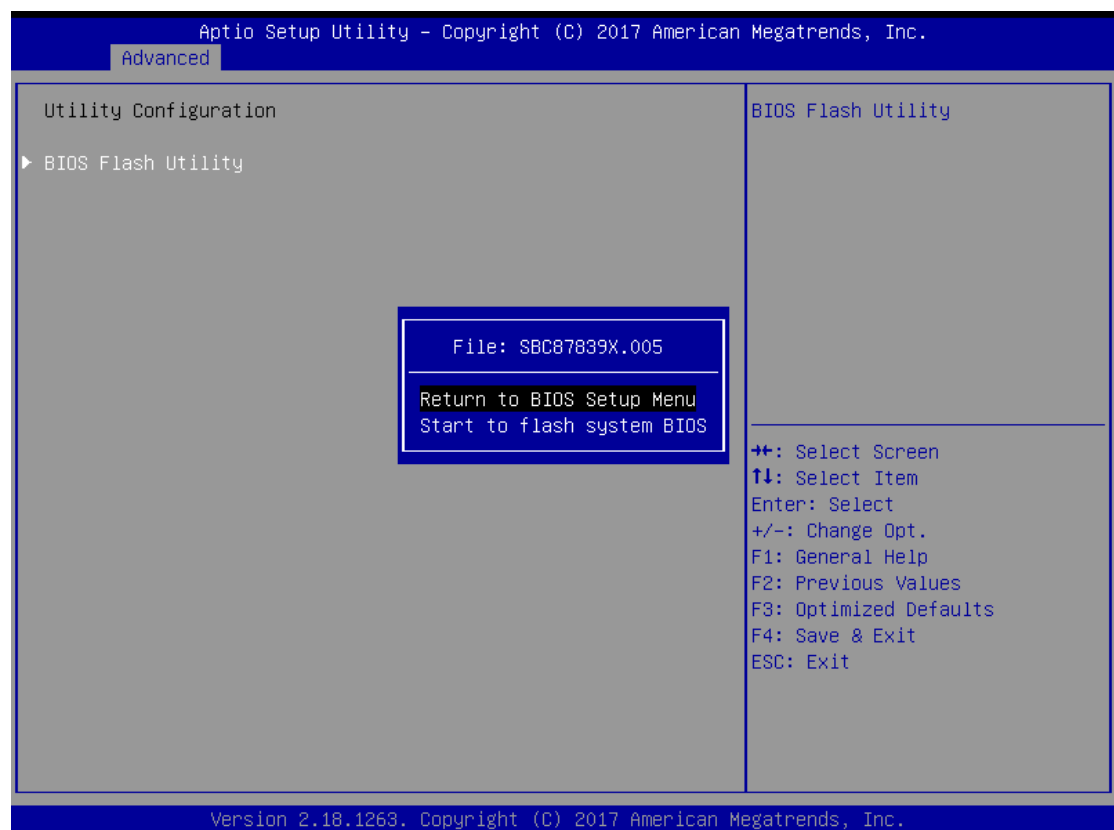
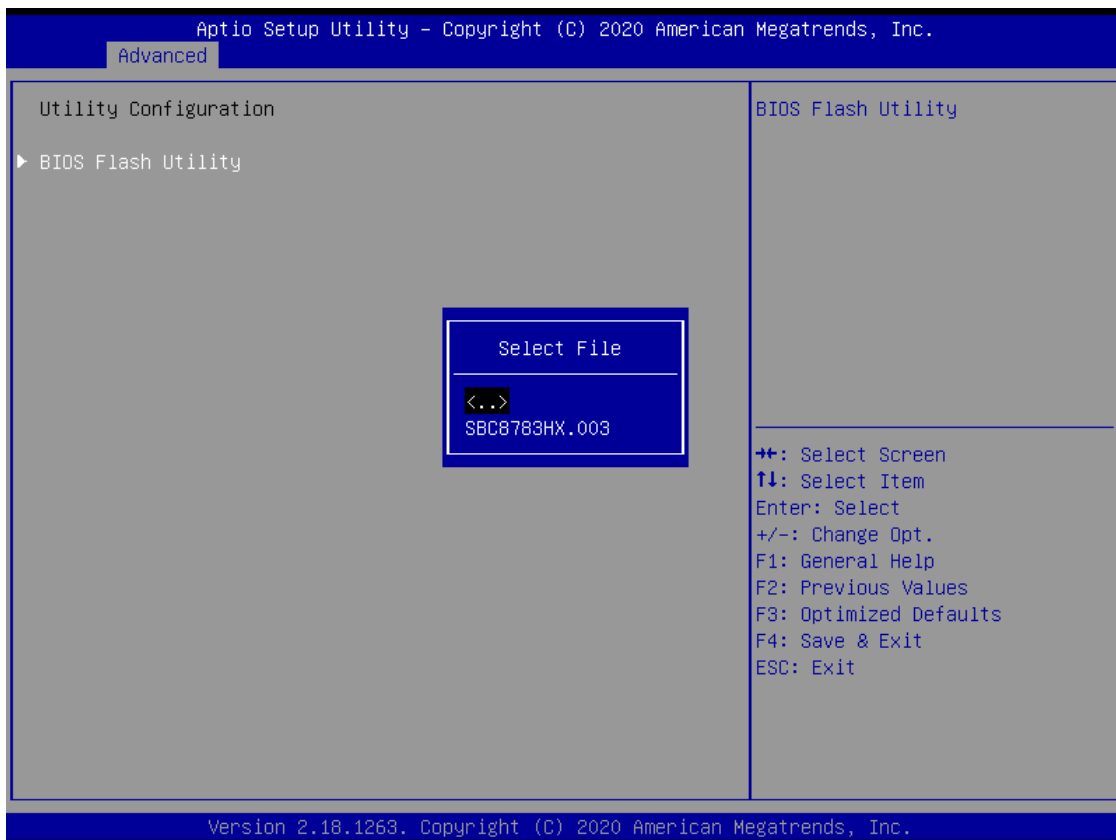
## Utility Configuration

BIOS flash utility is a tool used for flashing BIOS on setup menu, follow the step to flash BIOS.

1. Create a folder and rename it to Axiomtek on the root of USB storage (Ex: X:\Axiomtek).
2. Copy the BIOS file to the Axiomtek folder (Ex: X:\Axiomtek\SBC8783HX.003).  
(Note: The BIOS file name must contain the word SBC8783H)
3. Enter the BIOS flash utility and locate the BIOS file.
4. Select "Start flash system BIOS".





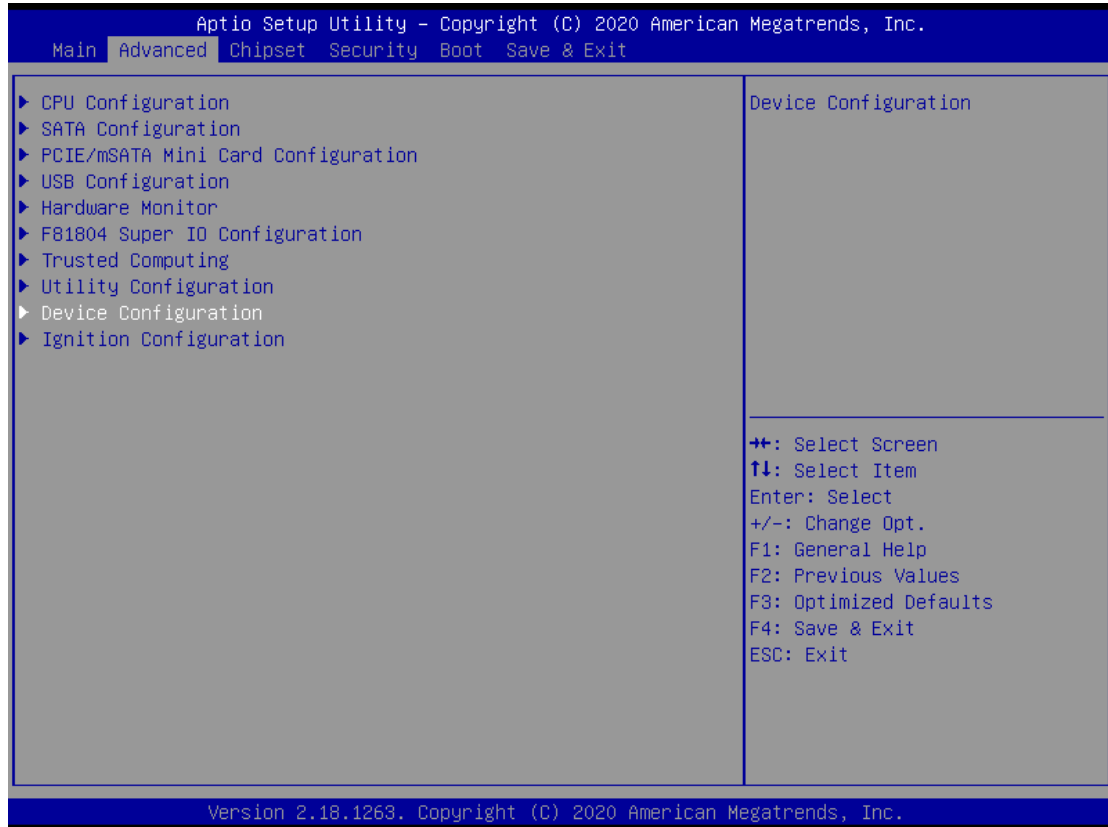


## Device Configuration

The DIO Modification default setting is “disable”.

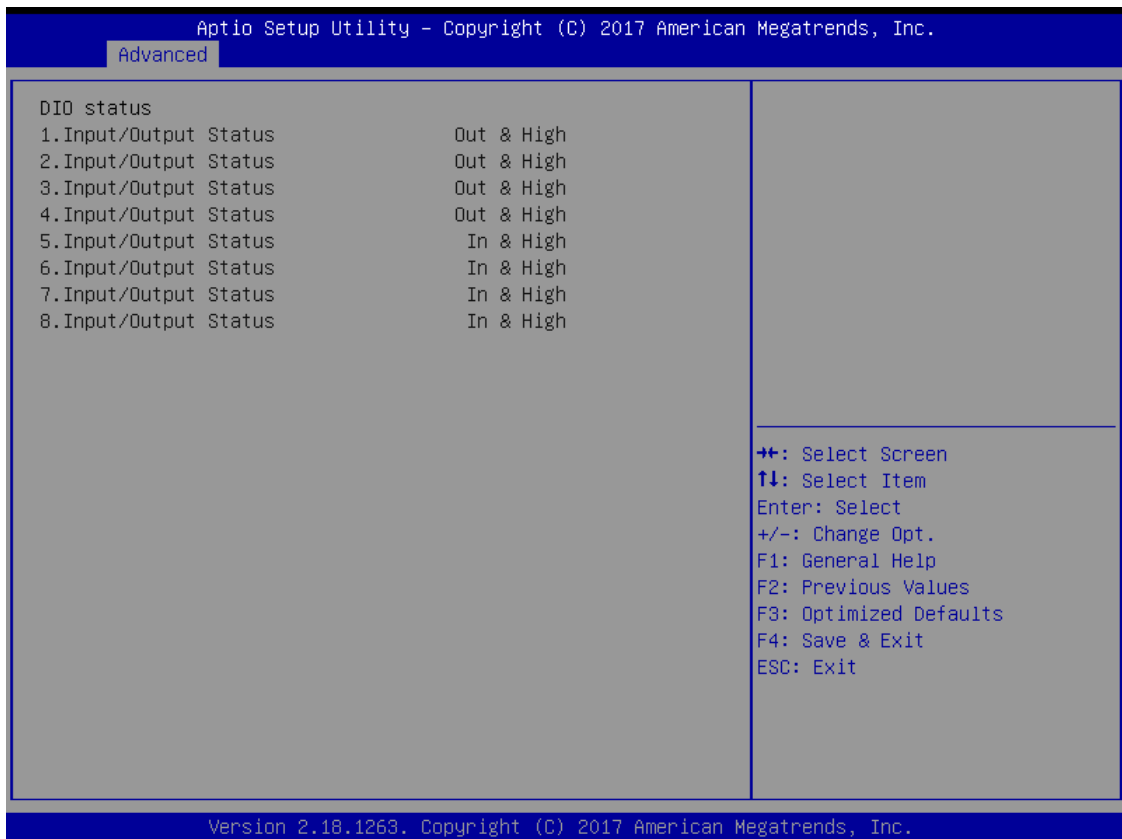
If the setting is changed to “enable”, you can load manufacture default and program DIO setting.

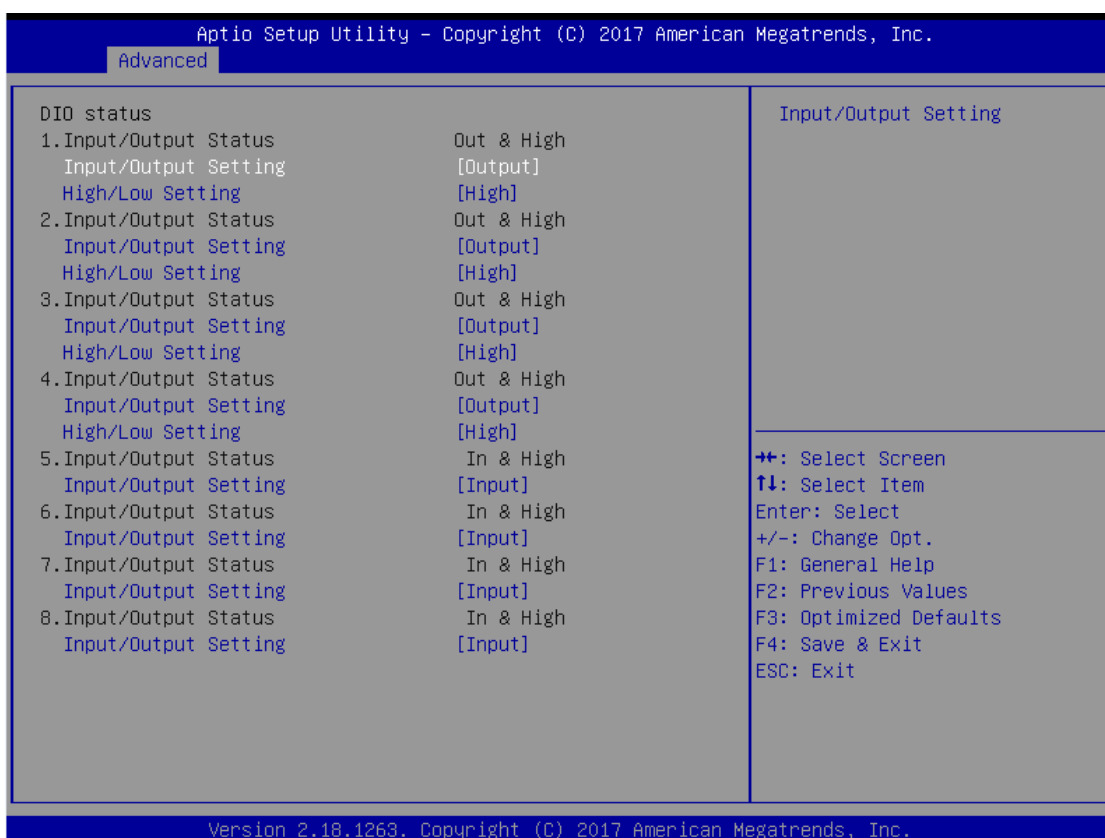
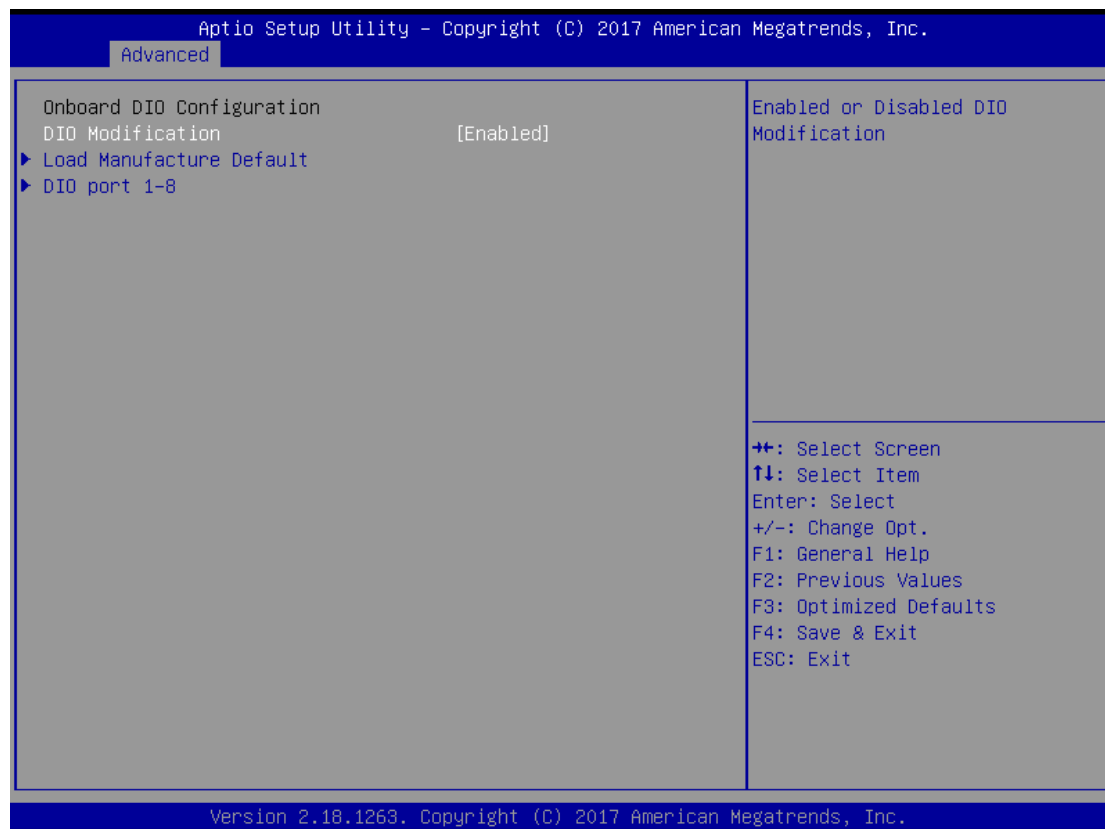
(Please refer to below graphics.)





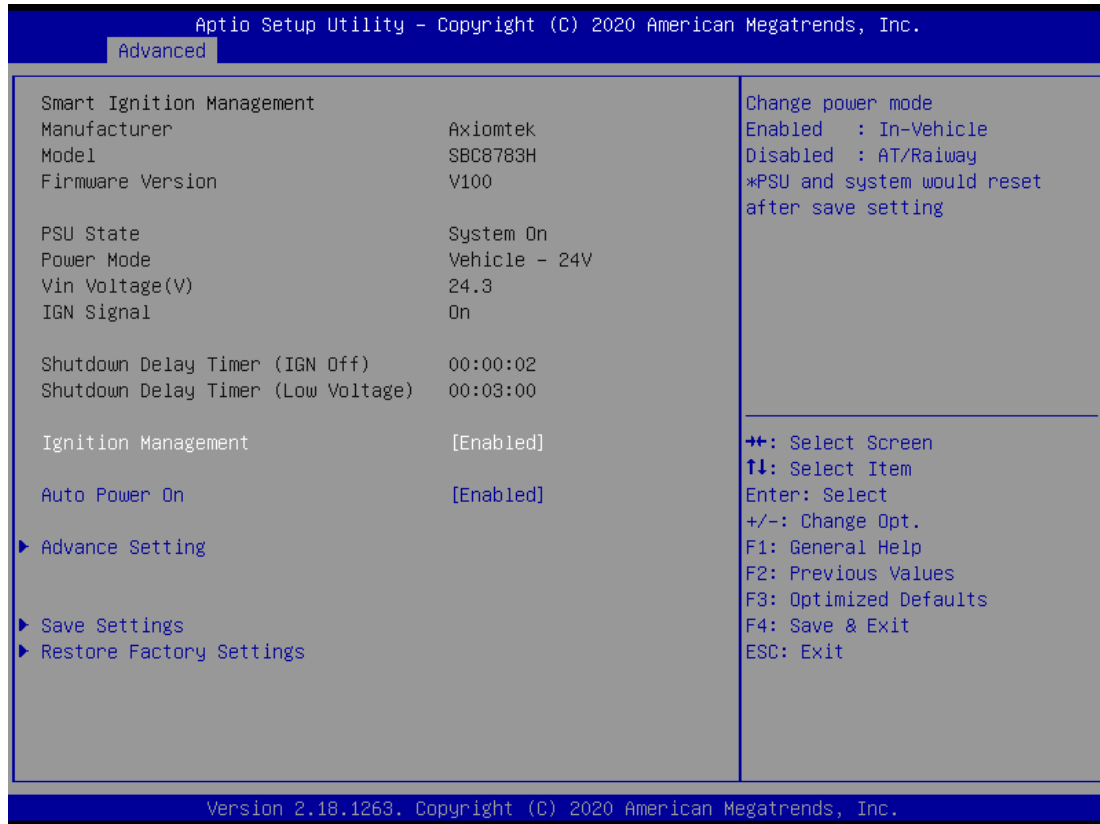




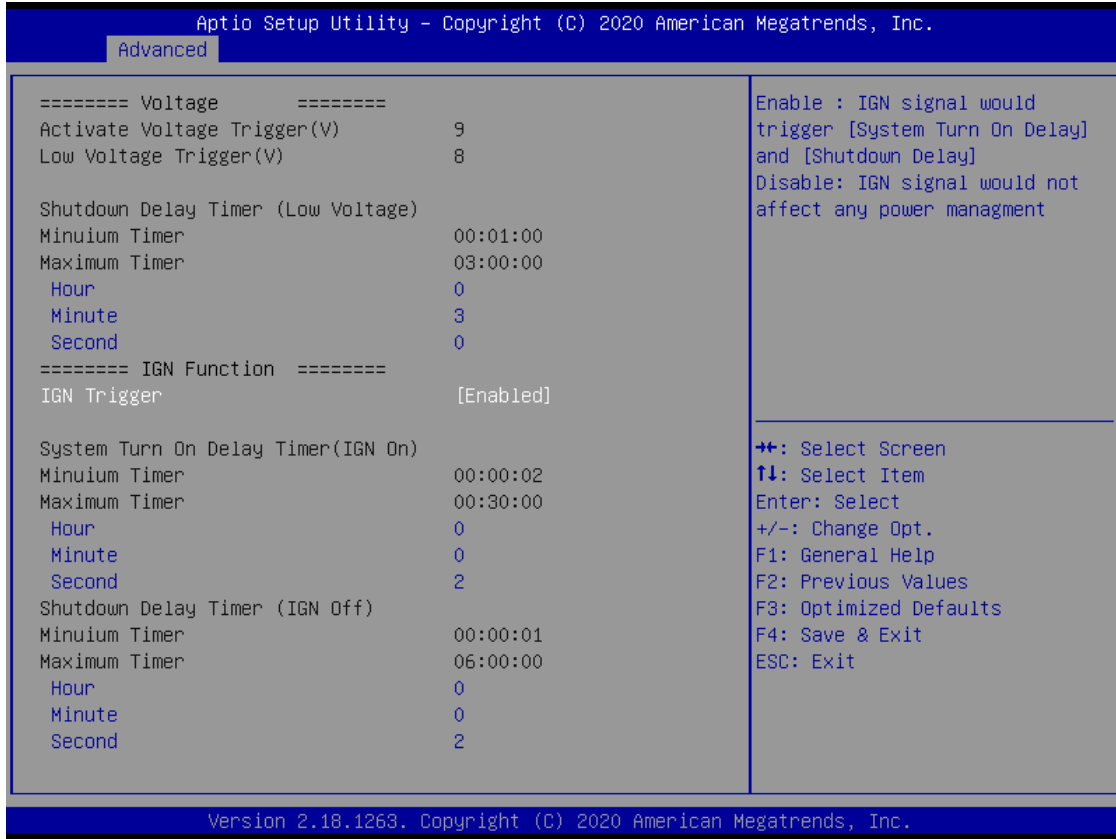


### Smart Ignition Management

The Smart Ignition Management setting includes Axiomtek's latest techniques in ignition management. Please read the description below with pictures.



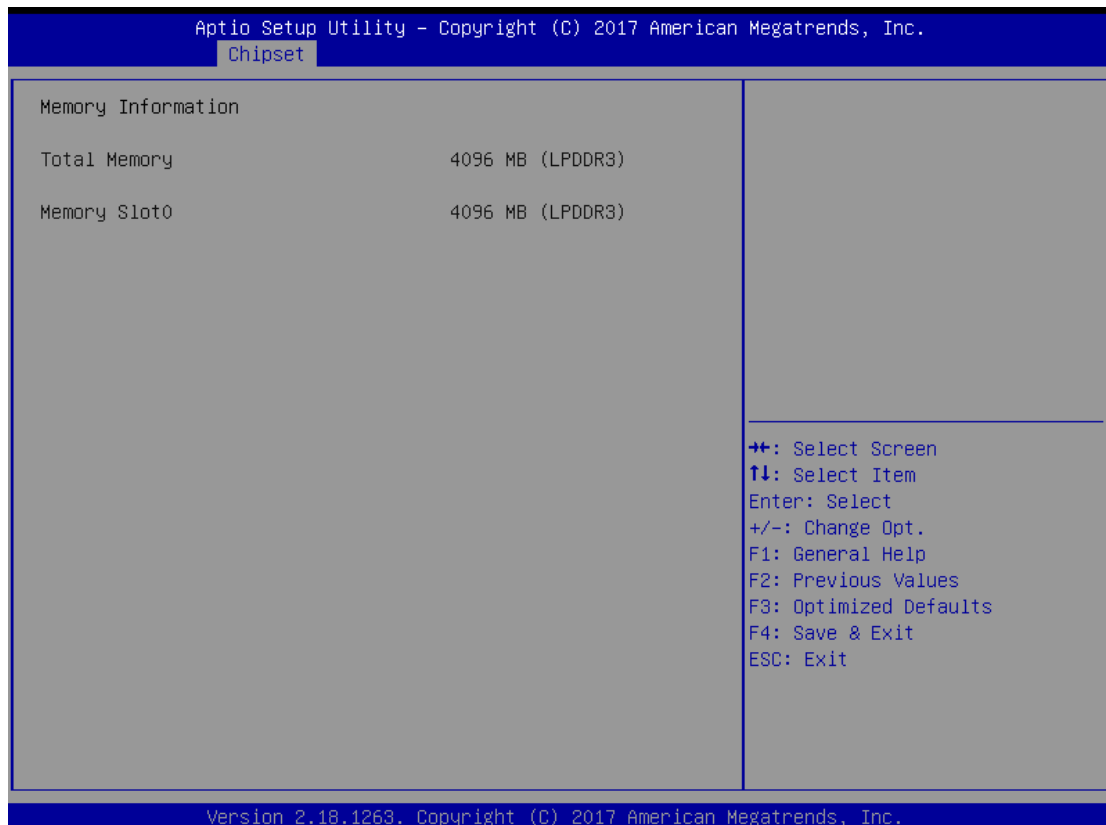
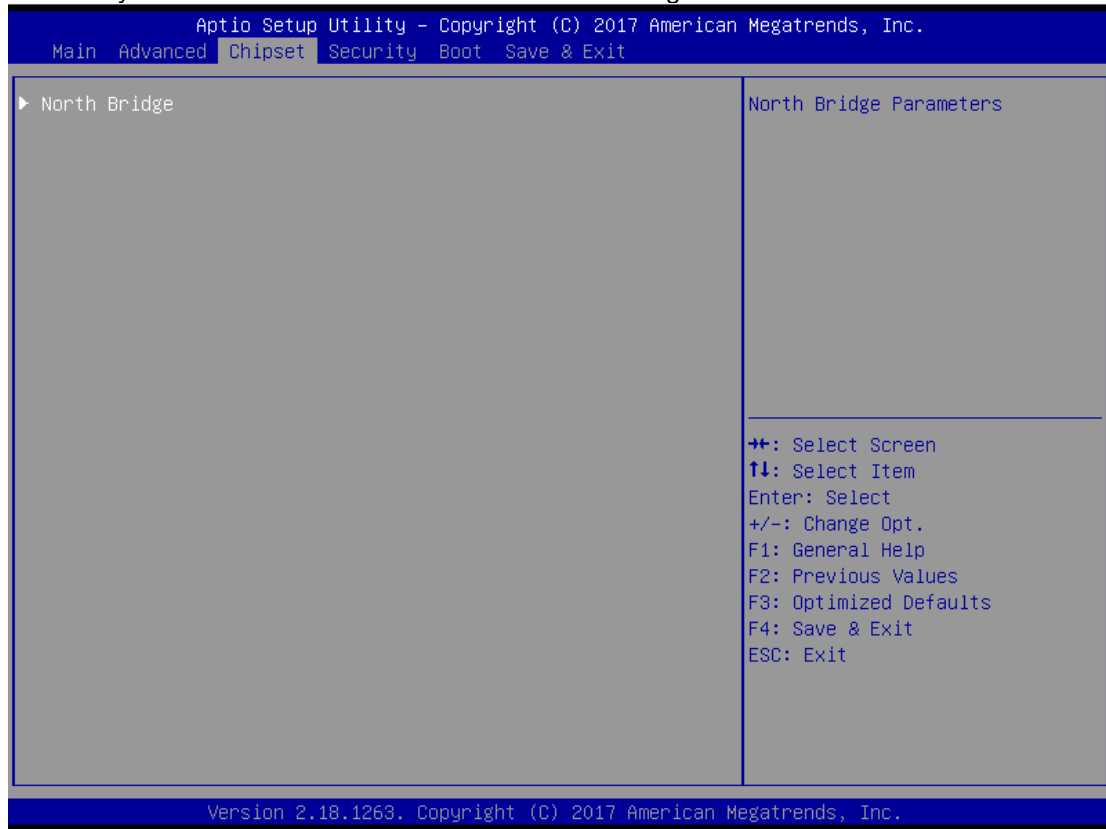
BIOS menu item	Description
<b>Ignition Management</b>	<p><b>Enabled</b> Switch to In-Vehicle mode (12/24 VDC power input)</p> <p><b>Disabled</b> Switch to AT/Railway mode (9-36VDC power input) <b>*PSU and system will reset after setting is saved</b></p>
<b>Auto Power On</b>	<p><b>Enabled</b> System will turn on automatically under below conditions: - Manually disconnect and reconnect system power - Power interruption: power resumes after power fail</p> <p><b>Disabled</b> System will not turn on automatically when power is connected or power resumes from a power failure</p>
<b>Advance Setting</b>	Set system on/off timing and voltage threshold levels
<b>Save Settings</b>	Save the current settings to PSU
<b>Restore Factory Settings</b>	Restore factory defaults to remove any incorrect or corrupt settings preventing the system from properly powering on/off



BIOS menu item	Description
<b>Activate Voltage Trigger</b>	The system only turns on when the power source delivers the voltage higher than the value you set here.
<b>Low Voltage Trigger</b>	The system will begin countdown stage once voltage drops below the value you set here. If the power source voltage does not come back above the value of [Activate Voltage Trigger] within the time you set for [Shutdown Delay Time (Low Voltage)], the system will shut down and remain off.
<b>Shutdown Delay Timer (Low Voltage)</b>	The counter will be activated once power source voltage drops below the value defined in [Low Voltage Trigger]. The system will be forced to turn off once timer completes countdown.
<b>IGN Trigger</b>	<p><b>Enable</b>      IGN signal will trigger [System Turn On Delay] and [Shutdown Delay].</p> <p><b>Disable</b>      IGN signal will not affect any power management.</p>
<b>System Turn On Delay Timer (IGN On)</b>	When receiving the IGN signal, the system will be turned on after setup time is counted down. The counter will be reset if IGN is off and on during the system countdown time.
<b>Shutdown Delay Timer (IGN Off)</b>	When the system is on, IGN voltage goes off, and the system will be gracefully shut down from operating system after setup timer signal trigger within the time you set. Additionally, if power source voltage is lower than the setup value it will cause the system to turn off as well.

### 3.4 Chipset Feature

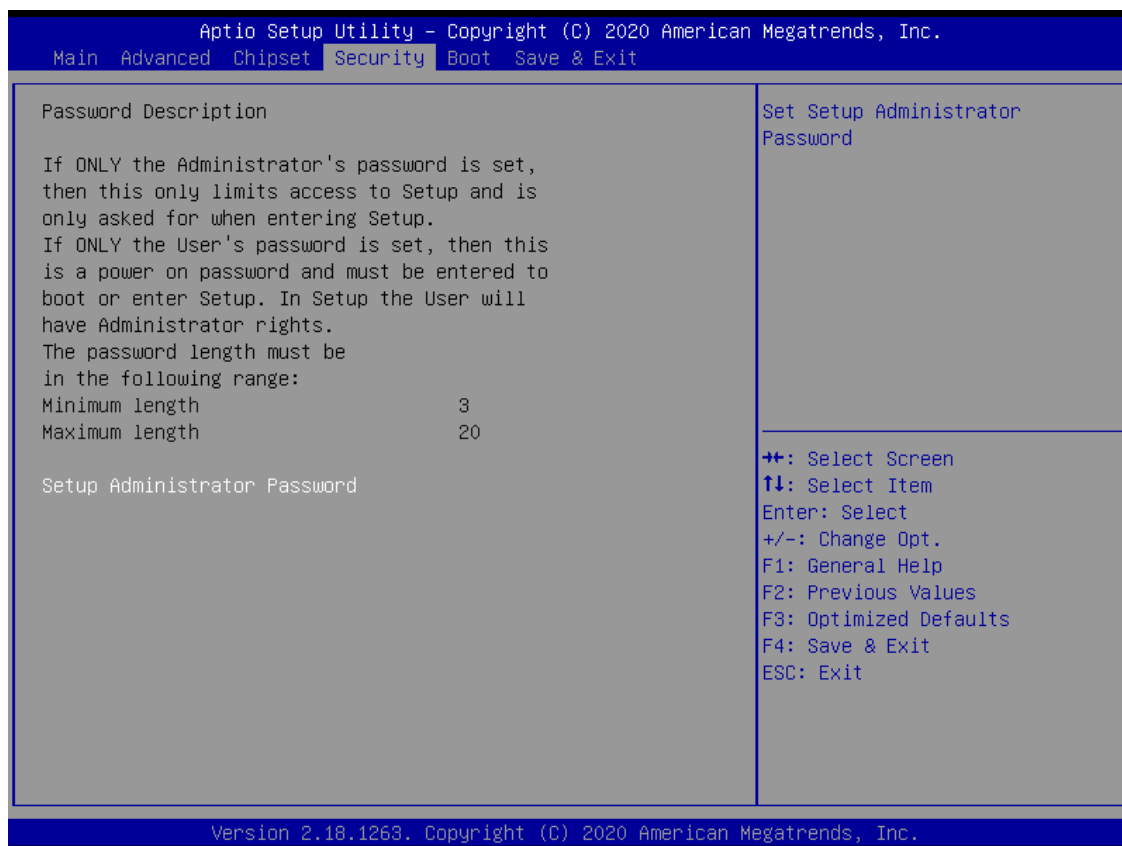
The Chipset menu allows users to change the advanced chipset settings. Users can select any of the items in the left frame of the screen to go to the sub menus



### 3.5 Security

The Security menu allows users to enhance system security by setting an administrator password. No password has been set in the default setting.

(Please refer to below graphics.)



**Note:** The BIOS default has no password. The user must remember the password after creating one. If the user forgets the password RMA is the only solution.

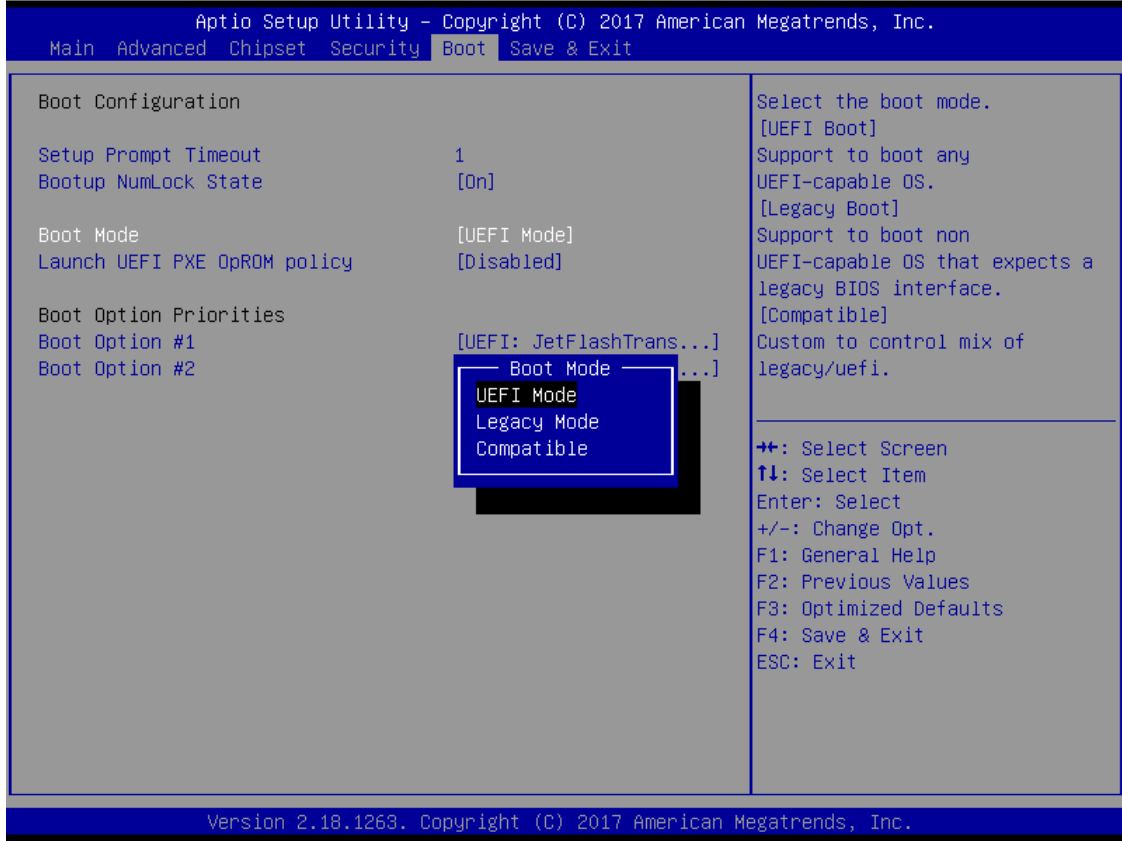
### 3.6 Boot Mode

The Boot menu allows users to change boot options of the system, providing UEFI, Legacy, and Compatible modes to select from.

The default setting boot mode is [UEFI Mode].

The default setting for Launch UEFI PXE OpROM policy is [Disabled].

(Please refer to below graphics.)



Compatible Mode: When using PCIe to SATA device, option ROM can use this mode setting.

When selecting the Compatible mode:

The default setting for PXE OpROM is [Disable]

The default setting for Video OpROM is [UEFI]

The default setting for Storage OpROM is [UEFI]

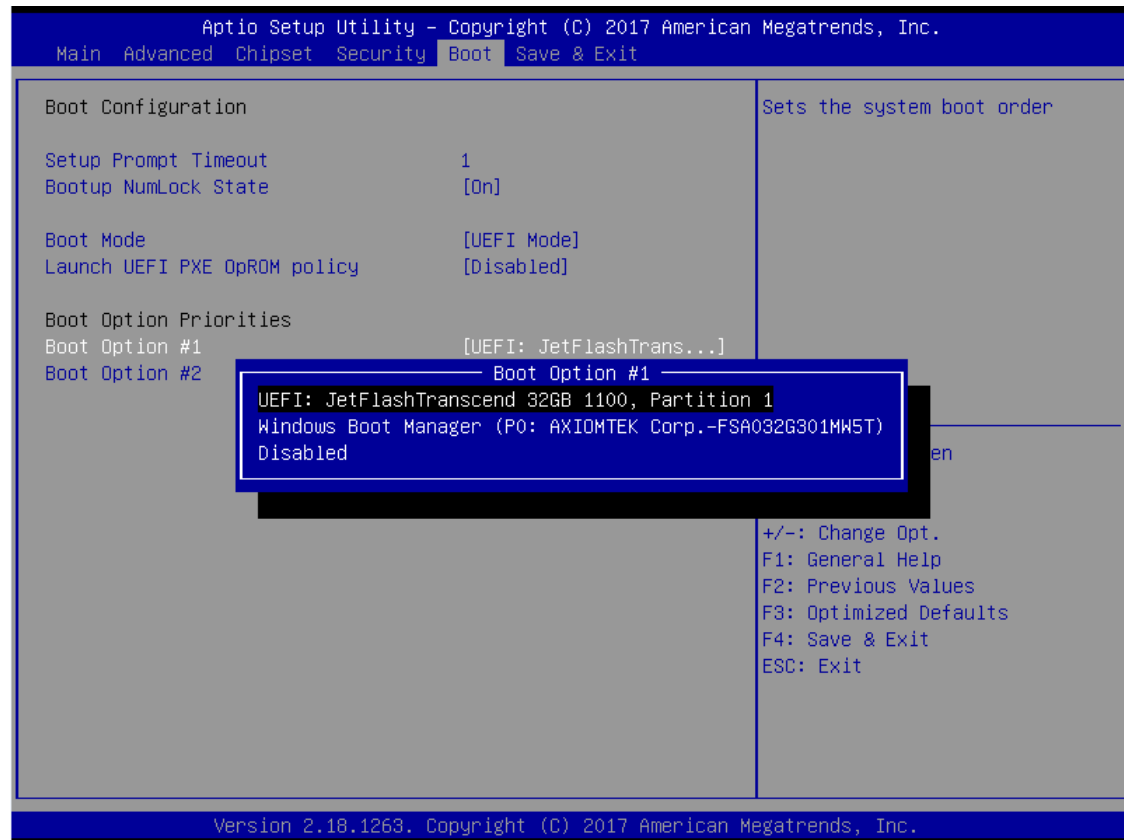




### Boot Option Priorities

Boot Option Priorities allows the user to specify the boot device priority sequence among the available devices, if the user is using a USB device. Specify an available device for a boot option number (Boot Option #1, #2...) to set boot priorities.

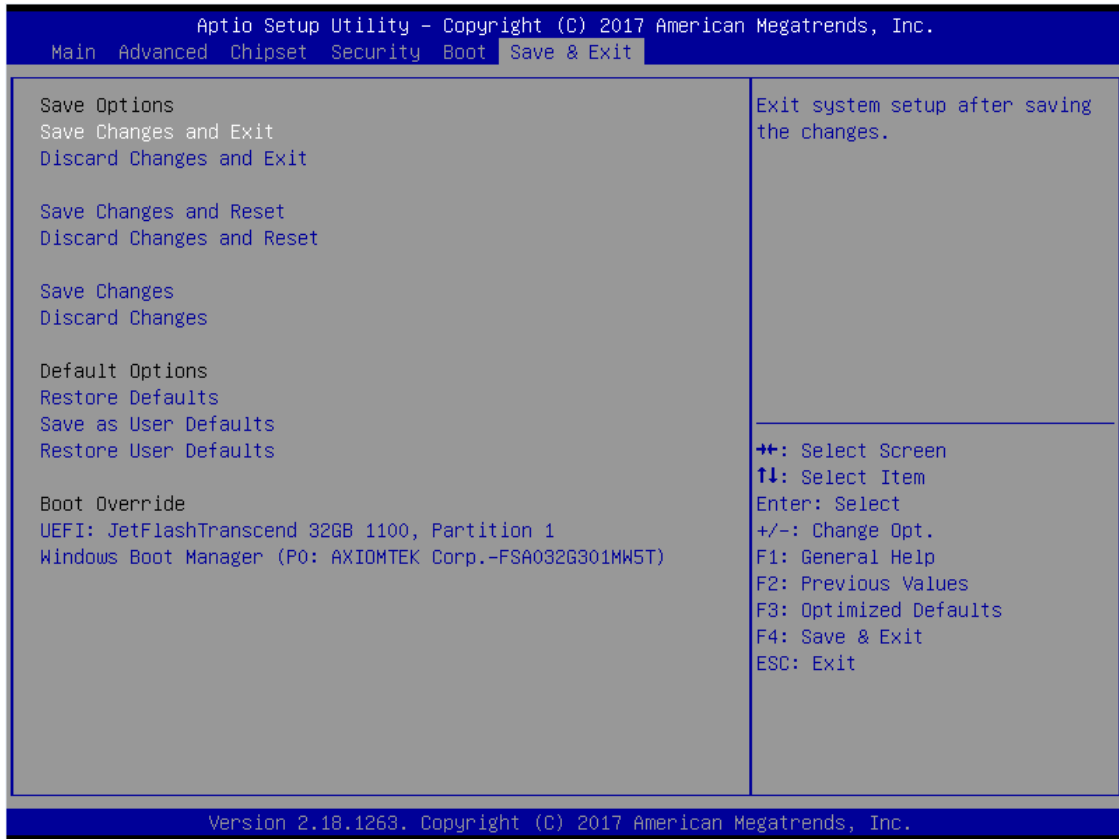
(Please refer below graphics.)



### 3.7 Save & Exit

The Save & Exit menu allows users to determine whether or not to accept their modifications to the system configuration, or to keep default values for optimal fail-safe performance.

(Please refer to below graphics.)



#### Save Changes and Exit

When users have completed the system configuration changes, select this option to leave Setup and return to Main Menu. Select Save Changes and Exit from the Save & Exit menu and press <Enter>. Select Yes to save changes and exit.

#### Discard Changes and Exit

Select this option to quit Setup without making any permanent changes to the system configuration and return to Main Menu. Select Discard Changes and Exit from the Save & Exit menu and press <Enter>. Select Yes to discard changes and exit.

#### Save Changes and Reset

After completing the system configuration changes, select this option to leave Setup and reboot the computer so the new system configurations will take effect. Select Save Changes and Reset from the Save & Exit menu and press <Enter>. Select Yes to save changes and reset.

#### Discard Changes and Reset

Select this option to quit Setup without making any permanent changes to the system configuration and reboot the computer. Select Discard Changes and Reset from the Save & Exit menu and press <Enter>. Select Yes to discard changes and reset.

### **Save Changes**

After completing the system configuration changes, select this option to save changes. Select Save Changes from the Save & Exit menu and press <Enter>. Select Yes to save changes.

### **Discard Changes**

Select this option to quit Setup without making any permanent changes to the system configuration. Select Discard Changes from the Save & Exit menu and press <Enter>. Select Yes to discard changes.

### **Restore Defaults**

It automatically sets all Setup options to a complete set of default settings when users select this option. Select Restore Defaults from the Save & Exit menu and press <Enter>.

### **Save as User Defaults**

Select this option to save system configuration changes done so far as User Defaults. Select Save as User Defaults from the Save & Exit menu and press <Enter>.

### **Restore User Defaults**

It automatically sets all Setup options to a complete set of User Defaults when users select this option. Select Restore User Defaults from the Save & Exit menu and press <Enter>.

### **Boot Override**

Select a drive to immediately boot that device regardless of the current boot order.